

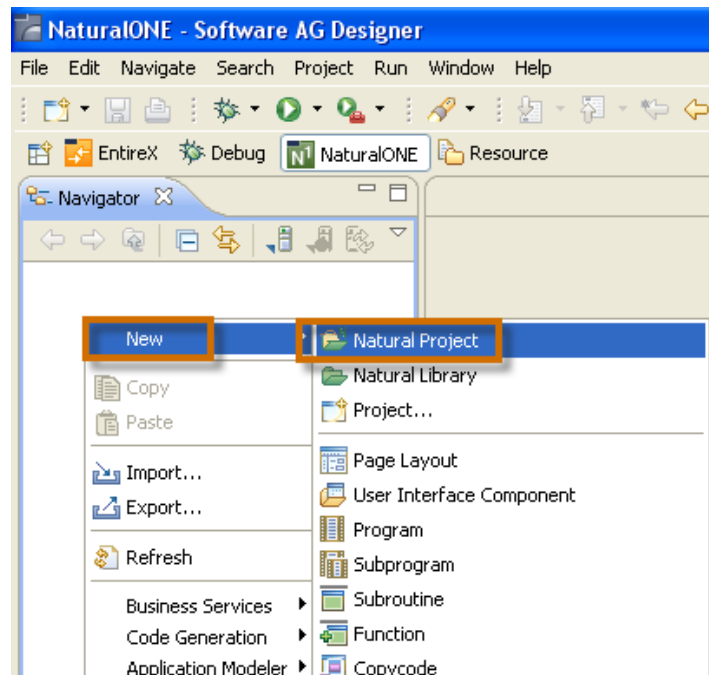
## NaturalONE Tutorial

### How to set-up a NaturalONE project?

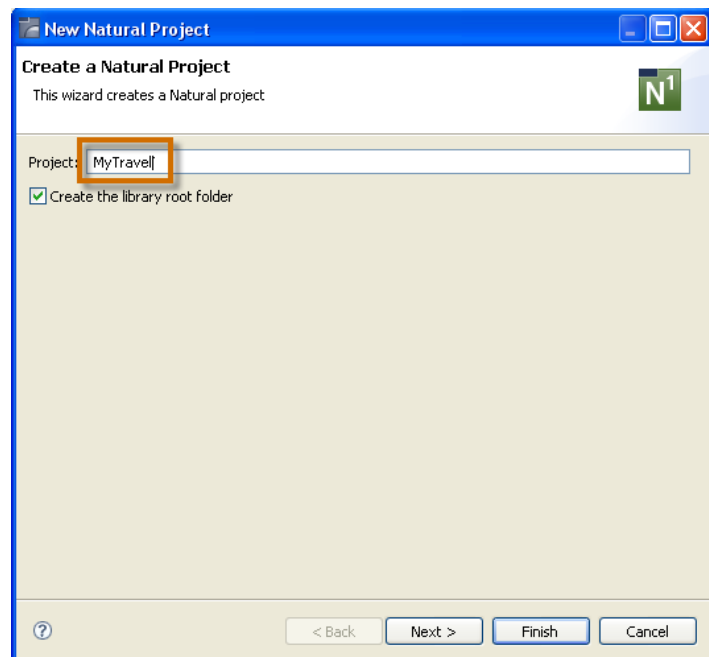
- 1 Activate the *NaturalONE* perspective.

In the *Navigator* view, click the right mouse button and choose:

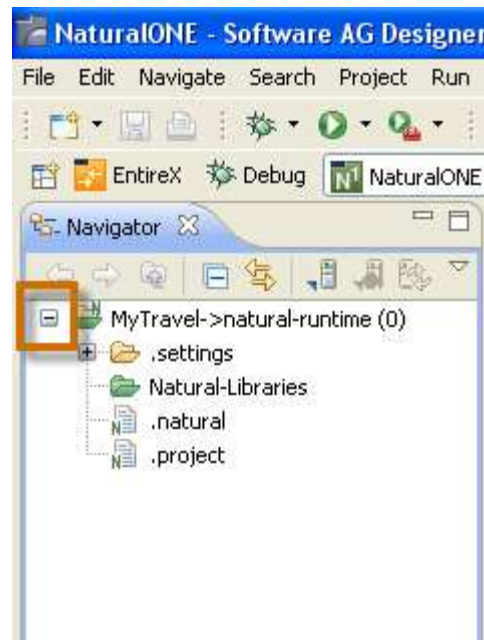
**New** → **Natural Project**.



- 2 Type: „**MyTravel**“ in the text box labeled *Project* and then click the **Finish** button.

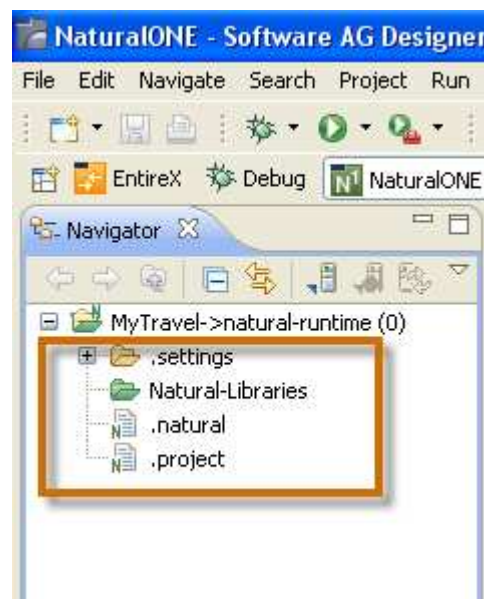


- 3 Notice that the new project you just defined appears in the *Navigator* view. Click on the '+' sign to the left of: *MyTravel->natural-runtime(n)* to see the contents of the new project.

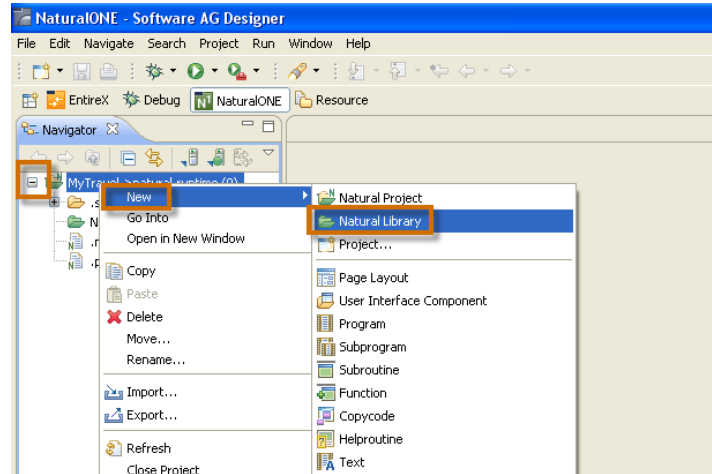


- 4 Notice the basic components of every NaturalONE Project that were created automatically.

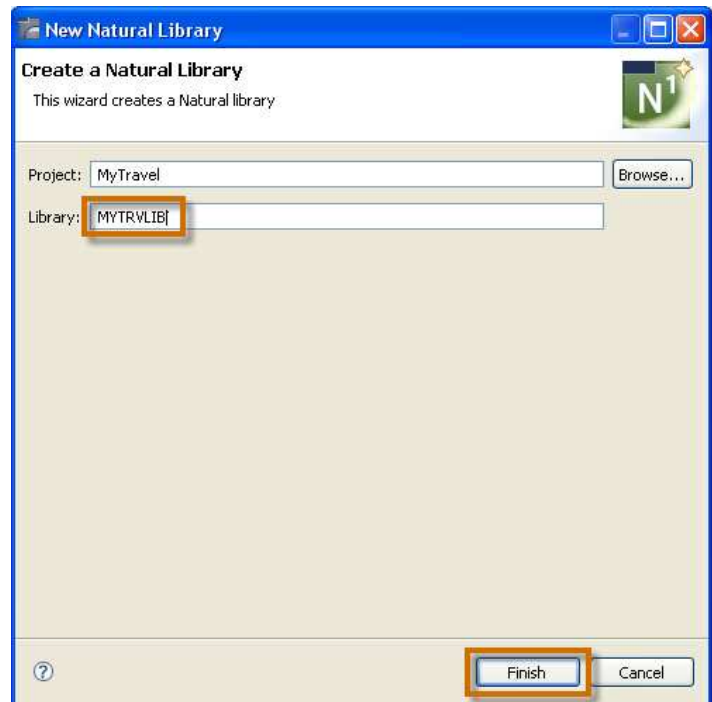
Later on in the tutorial, you will see more new components, be sure not to delete any of the basic components.



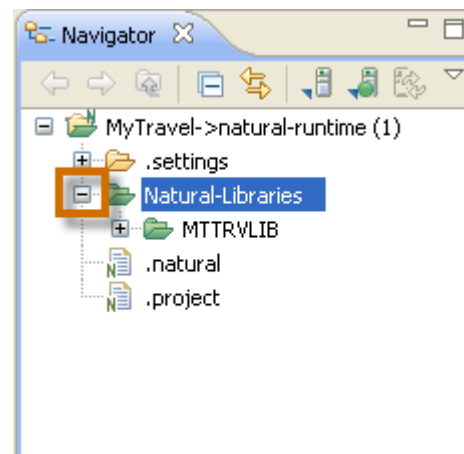
- 5 Right-Click on the '-' sign to the left of: *MyTravel Project* ->*natural-runtime(n)* and choose:  
**New** → **Natural Library**.



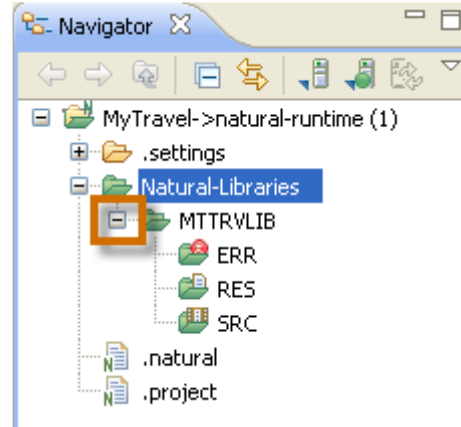
- 6 Type: „**MYTRVLIB**“ in the text box labeled *Library* and click the **Finish** button.



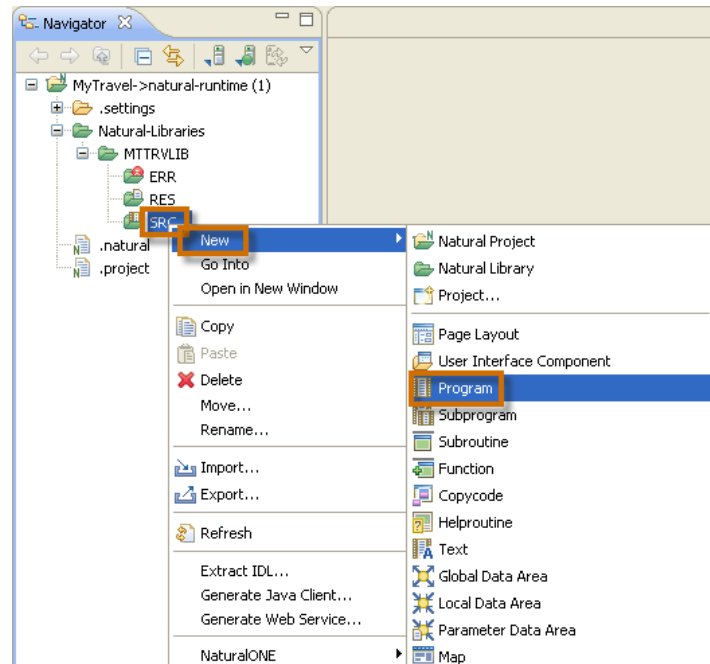
- 7 Click on the '+' sign to the left of: *Natural-Libraries*



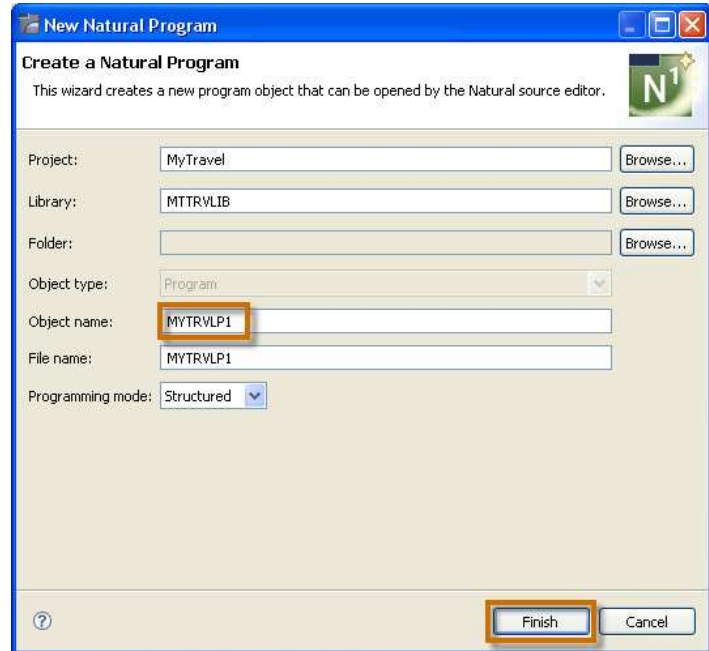
- 8 Notice the new library *MYTRVLIB* that you just created. Click on the '+' sign to the left of: *MYTRVLIB* and notice the three folders that were created: *ERR*, *RES* and *SRC*.



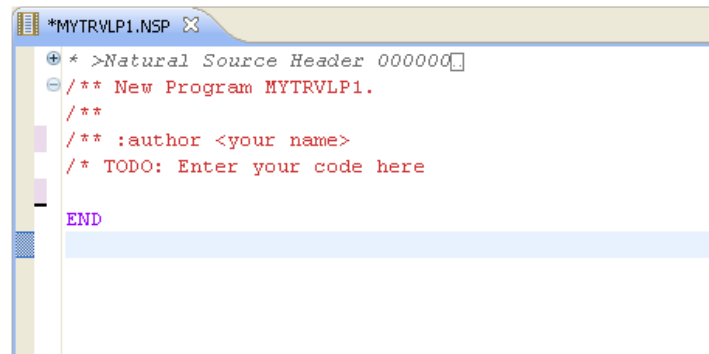
- 9 In order to create a program: Right Click on *SRC* and choose: **New** → **Program**.



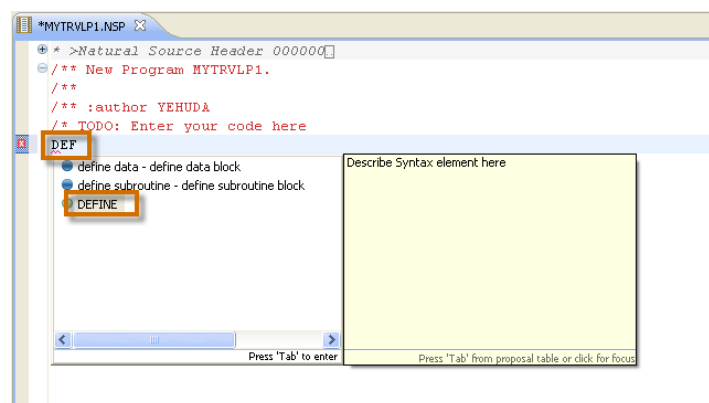
- 10 Type „MYTRVLP1“ in the box labeled *Object Name* and click *Finish*.



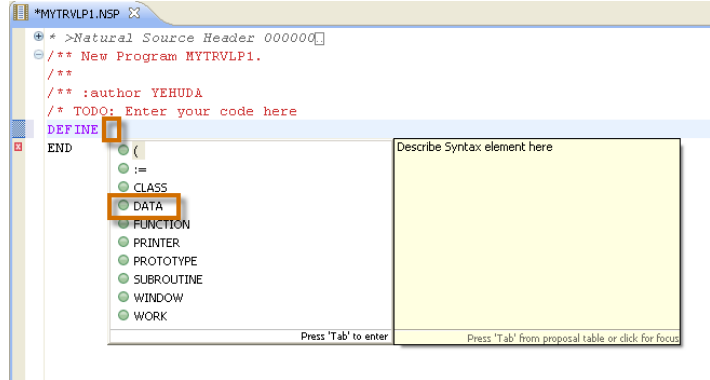
- 11 The Program **MYTRVLP1** has been created and is now opened within the editor. Notice the remarks at the beginning of the source. Press *Enter* after the word *here* at the end of the line: */\* TODO: Enter your code here* in order to insert a blank line.



- 12 Press *Ctrl+Space* to get NaturalONE's code assist to complete the command. Type "DEF" and choose *DEFINE*. Then press *Enter*.



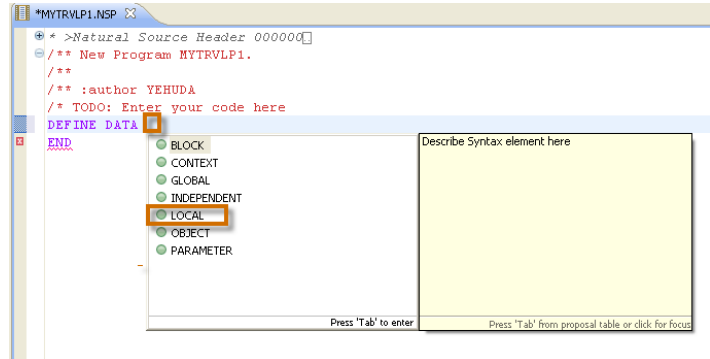
- 13 Create one space after the word **DEFINE** and press **Ctrl+Space**. Then choose **DATA** and press **Enter**.



```

*MYTRVLP1.NSP
>Natural Source Header 000000
/** New Program MYTRVLP1.
/**
/** :author YEHUDA
/* TODO: Enter your code here
DEFINE
END
    
```

- 14 Repeat the same to choose **Local**.



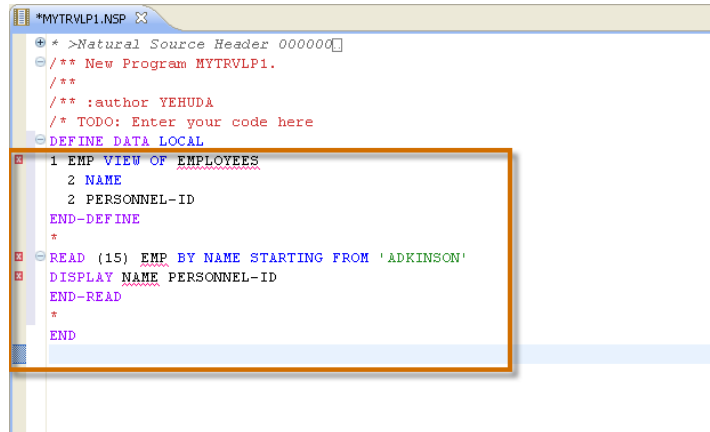
```

*MYTRVLP1.NSP
>Natural Source Header 000000
/** New Program MYTRVLP1.
/**
/** :author YEHUDA
/* TODO: Enter your code here
DEFINE DATA
END
    
```

- 15 Copy the following code on the next line following **DEFINE DATA LOCAL**:

```

1 EMP VIEW OF EMPLOYEES
  2 NAME
  2 PERSONNEL-ID
END-DEFINE
*
READ (15) EMP BY NAME
STARTING FROM 'ADKINSON'
DISPLAY NAME PERSONNEL-ID
END-READ
*
    
```



```

*MYTRVLP1.NSP
>Natural Source Header 000000
/** New Program MYTRVLP1.
/**
/** :author YEHUDA
/* TODO: Enter your code here
DEFINE DATA LOCAL
1 EMP VIEW OF EMPLOYEES
  2 NAME
  2 PERSONNEL-ID
END-DEFINE
*
READ (15) EMP BY NAME STARTING FROM 'ADKINSON'
DISPLAY NAME PERSONNEL-ID
END-READ
*
END
    
```

- 16 You can see little red error markers to the left of your source code.

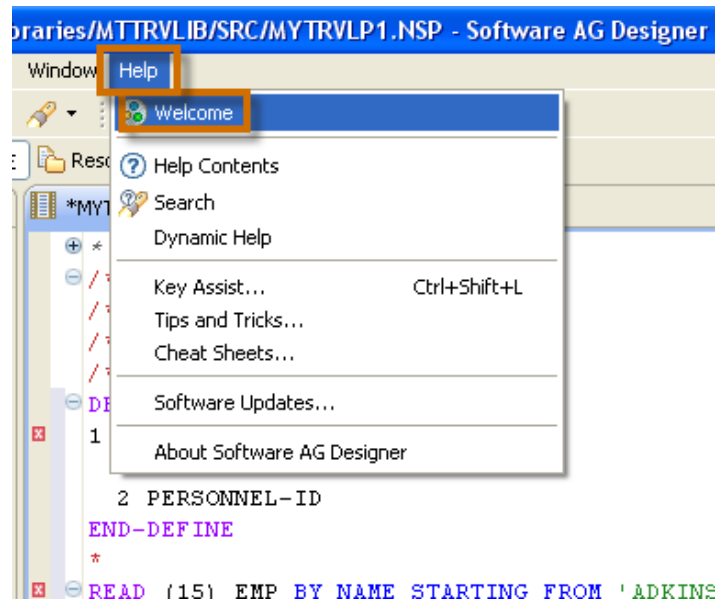
This is because you are referencing the *Employees* file in your code.

To resolve the reference, NaturalONE requires the existence of a DDM (Data Definition Module) in the same Natural Library as our program.

We will copy that DDM from the *Travel* sample. For this the *Travel* Sample must be available. If the *Travel* project already exists in your *Navigator* view, you can directly skip to step 1.19.

If not then choose:  
**Help → Welcome.**

- 17 Click on **Samples.**



18 You now see a few samples that are available:

#### Samples

Samples for installed Software AG Designer products

See also [http://www.softwareag.com/Corporate/community/dev\\_net](http://www.softwareag.com/Corporate/community/dev_net) (Internet access needed).

#### EntireX



Examples for EntireX are in the example folder of the EntireX installation.

#### NaturalONE

Learn more about NaturalONE by installing prefabricated samples in your workspace.

After installation, you have to build the sample project in your workspace with "Build Project" or "Rebuild Project".



#### Hello World application

This sample demonstrates a Natural project implementing a Hello World Natural for Ajax application.



#### Travel approval application

This sample demonstrates a Natural project implementing a business travel approval application.

19 Click on: **Travel approval application.**



#### Travel approval application

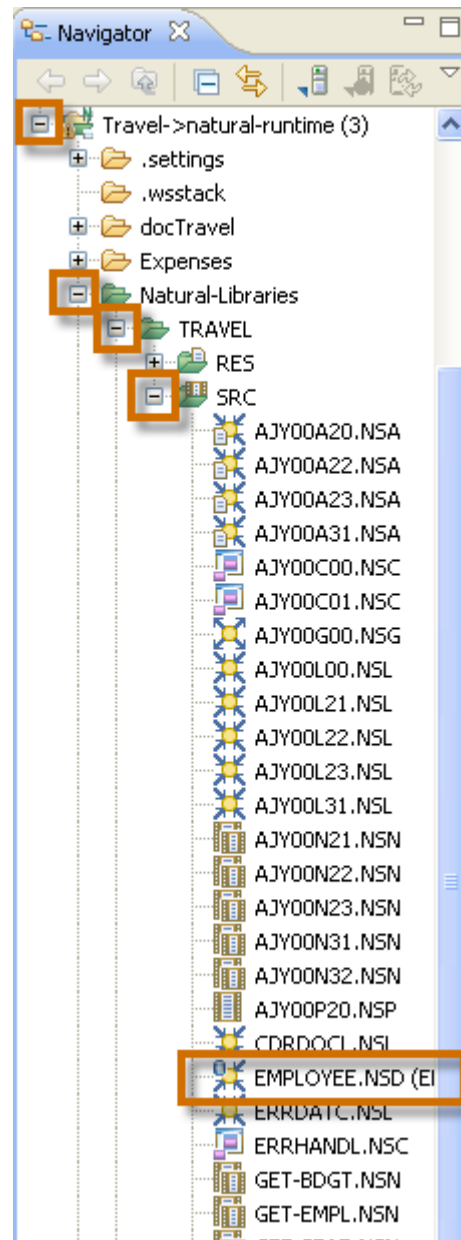
This sample demonstrates a Natural project implementing a business travel approval application.

20 Close the *Welcome* tab, by clicking on the **'x'**.

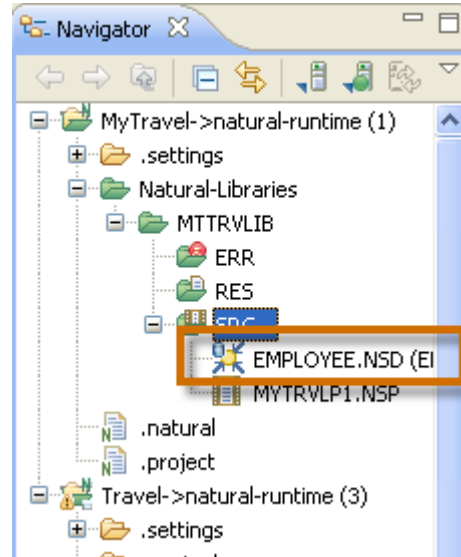


21 Select/Open the project *Travel*.

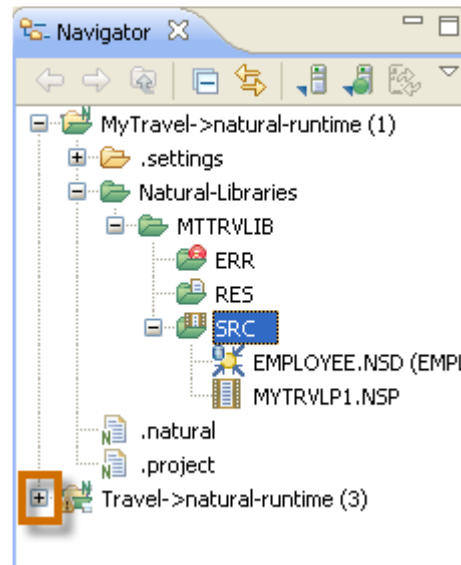
Then expand to: *Travel* → *Natural-Libraries* → *Travel* → *SRC* and locate *EMPLOYEE.NSD(EMPLOYEES)*.



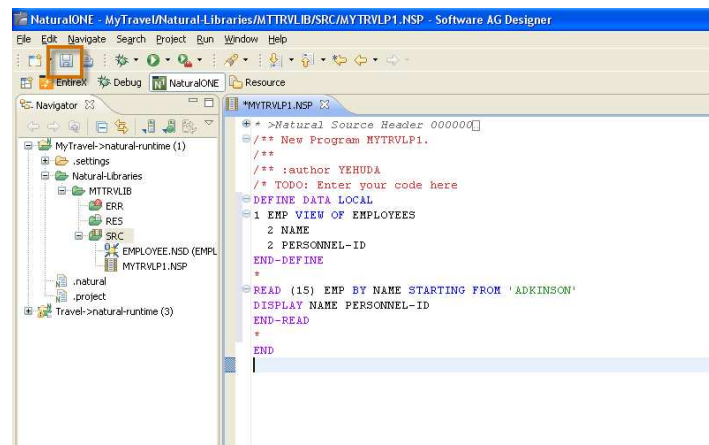
- 22 Copy (or Drag & Drop) **EMPLOYEE.NSD** to **MyTravel** → **Natural-Libraries** → **SRC**.



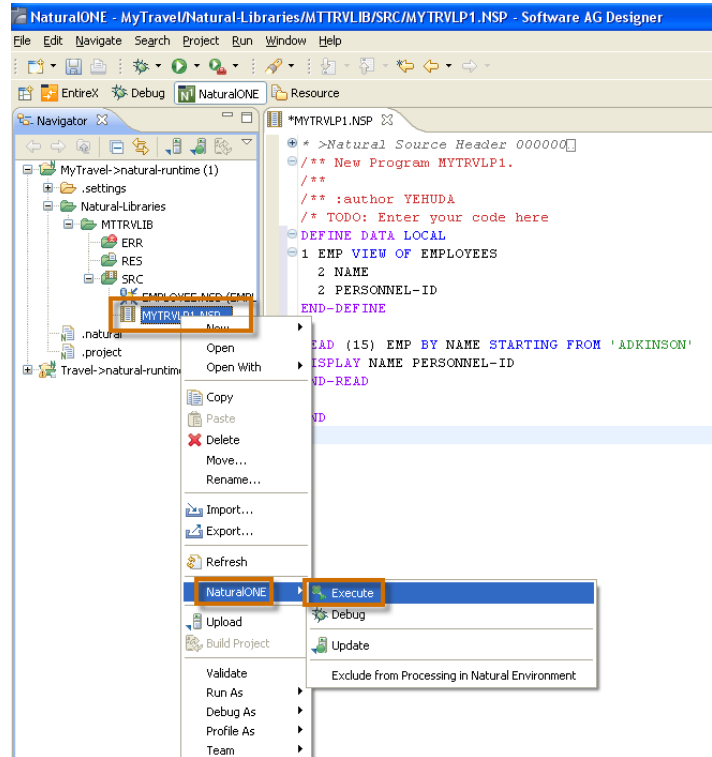
- 23 Click on the '+' sign to the left of **Travel->natural-runtime(n)** to collapse the **Travel** project.



- 24 Save the program you just wrote by clicking on the symbol in the toolbar.



25 You are now ready to run the program you wrote. In order to do so, right click **MYTRVLP01** and choose **NaturalONE →Execute**.



26 Look at the results and when you are finished you may press **Enter** to stop the execution of your first NaturalONE program.

