

NaturalONE Tutorial

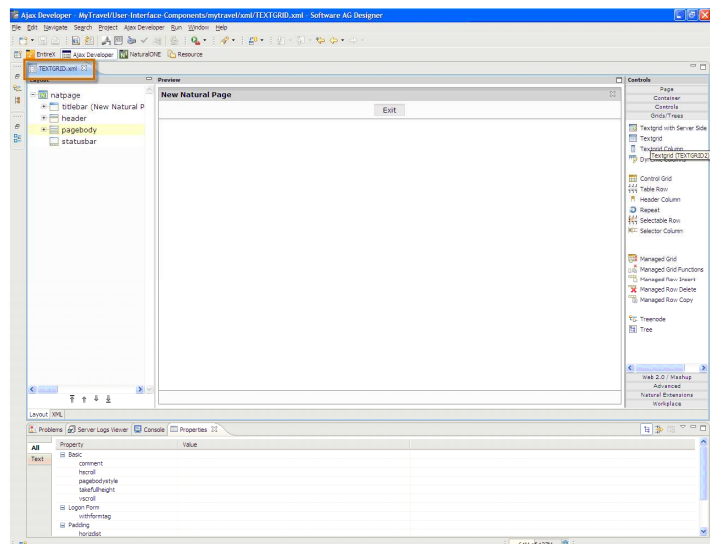
How to create a WebGUI with NaturalONE? - Working with a Table Grid -

Recommended Reading

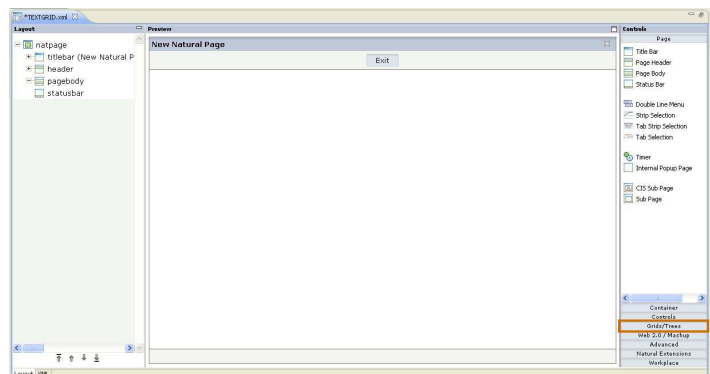
- NaturalONE tutorial: How to set-up a NaturalONE project?
- NaturalONE tutorial: How to create a Web GUI with NaturalONE?
- Creating a new Layout page -

1 Open the **Ajax Developer** perspective.

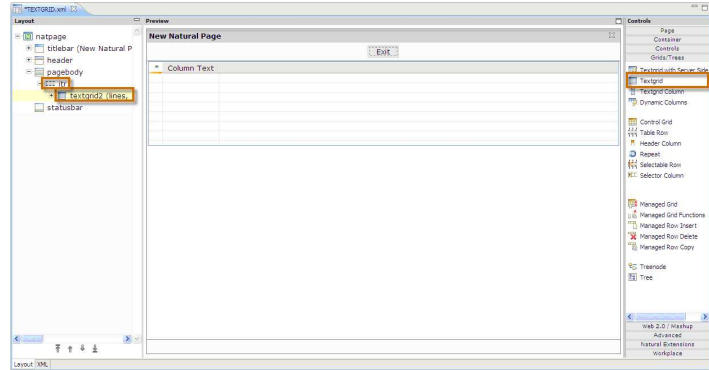
Create a new page layout called: **TEXTGRID**.



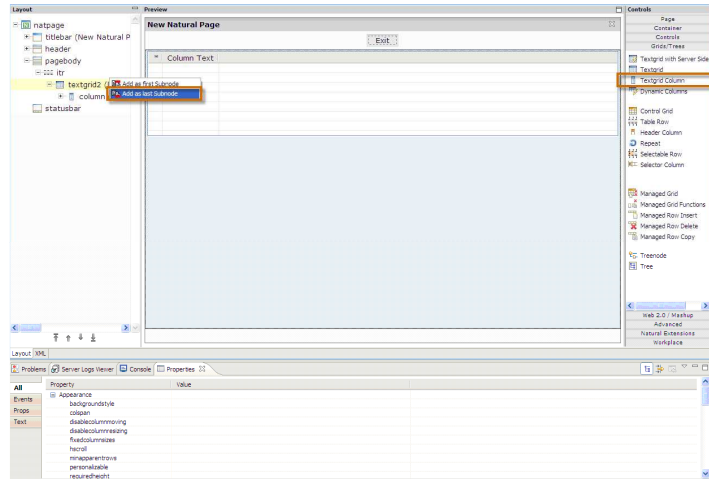
2 Select **Grids/Trees** on the **Controls** palette.



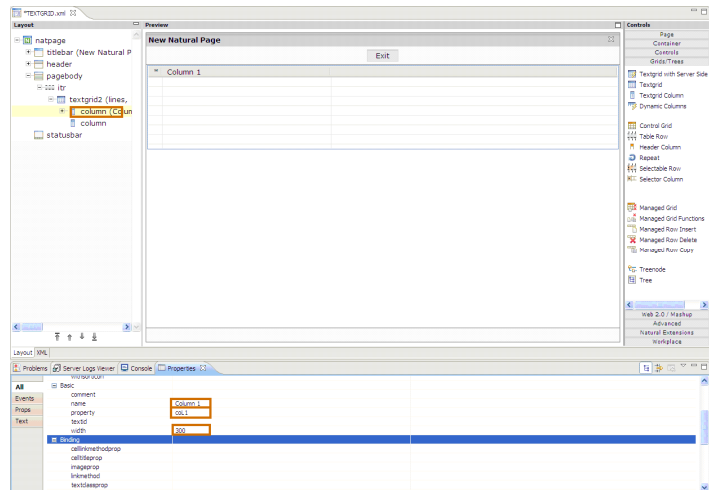
- 3 Select the **Textgrid icon**.
 Drag and drop it on the Preview Area.
 On the Layout area you can see a *ITR control* (which is automatically generated), and the Textgrid control as a subnode.
 The control is created with one column by default.



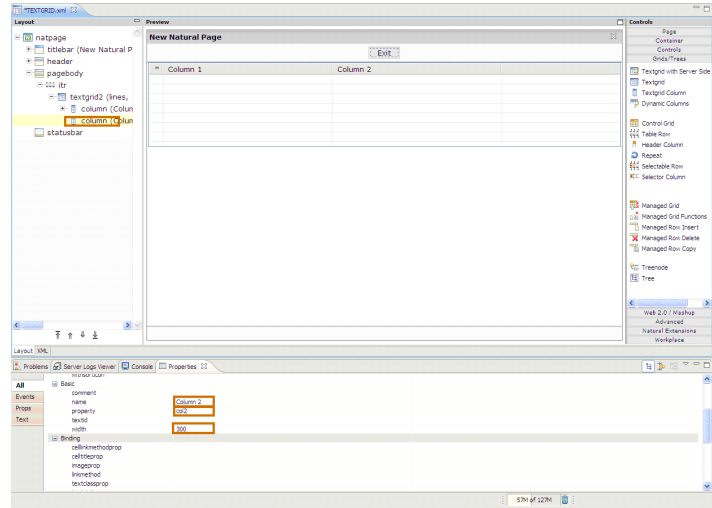
- 4 Select the **Textgrid Column icon** and drag & drop it on the textgrid node.
 On the *Layout* pane select **Add as last Subnode**.



- 5 You can see the textgrid control with two columns as subnodes.
 Set the following basic properties by clicking on the box to the left of each one:
name - this is the column header, set it to "**Column 1**"
property - the name of the data variable, set it to "**col1**"
width - the width of the control, set it to **300 px**.

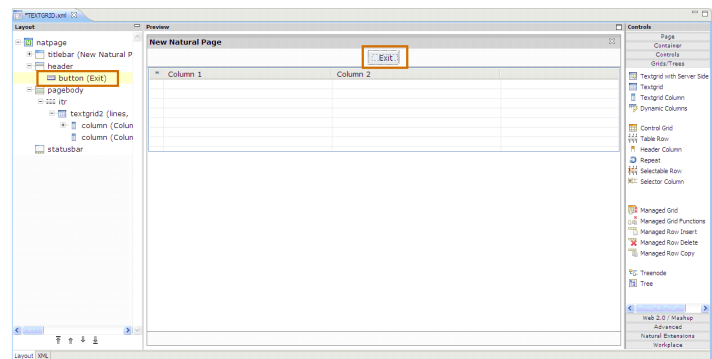


6 Change the same properties for the second column accordingly.



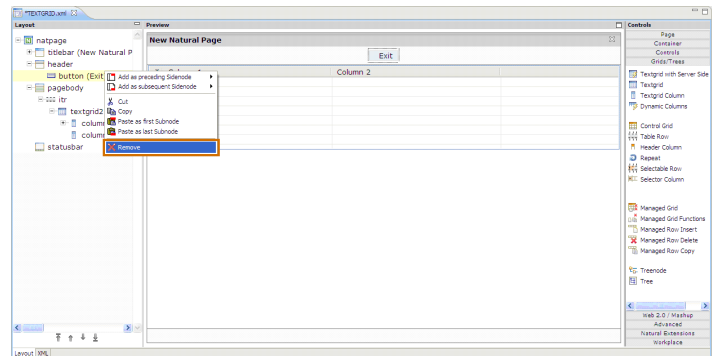
7 You will not need the *Exit* button for this tutorial. You will now remove it.

Select the **Exit** button in the *Preview* pane.
This button control is also highlighted in the *Layout* pane.



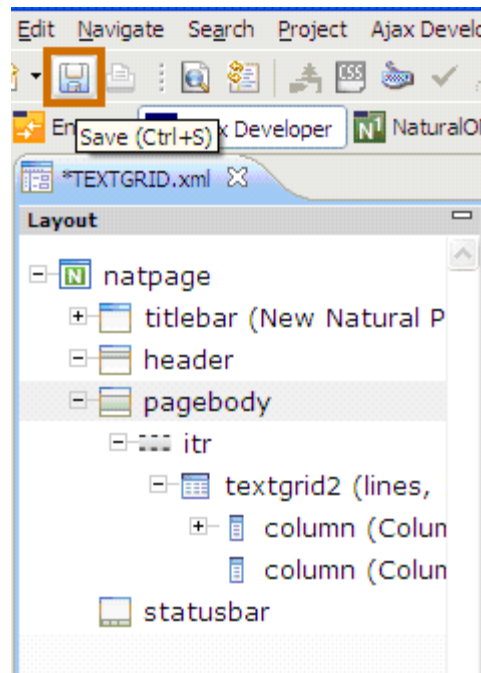
8 Select the button control in the *Layout* pane.

On the context menu choose **Remove**.

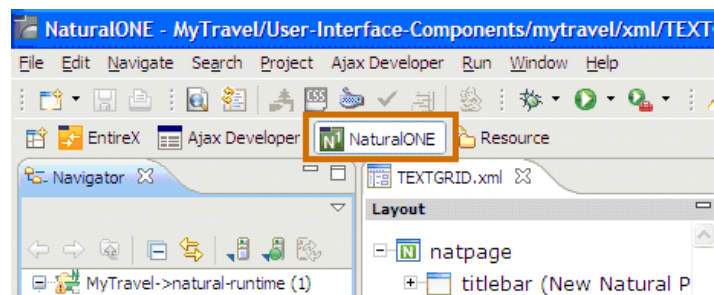


9 Press the **Save** icon.

The new layout is saved and the related Natural Adapter is created.

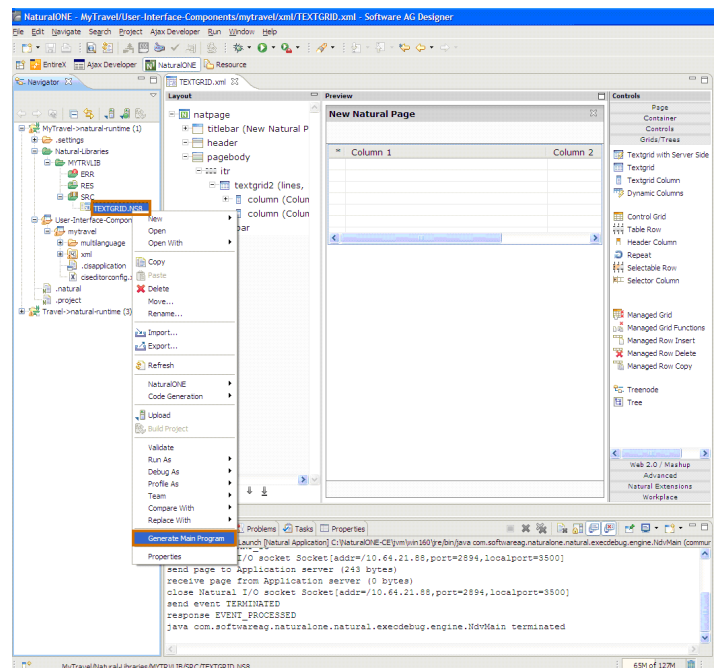


10 You will now create a program which uses the your layout:
Change to the **NaturalONE** perspective.

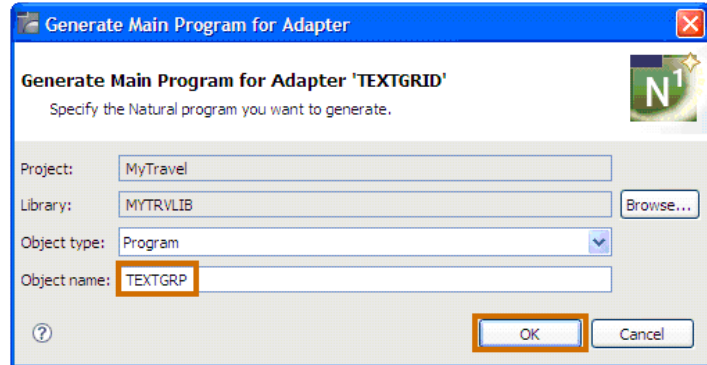


11 In the **Navigator** view, select the Natural Adapter generated in the **SRC** folder of your Natural Library.

Choose **Generate Main Program** on the context menu.



- 12 Type „**TEXTGRP**“ as *Object name* and press **OK**.



- 13 The generated program is opened in the NaturalONE source editor.

