

## NaturalONE Tutorial

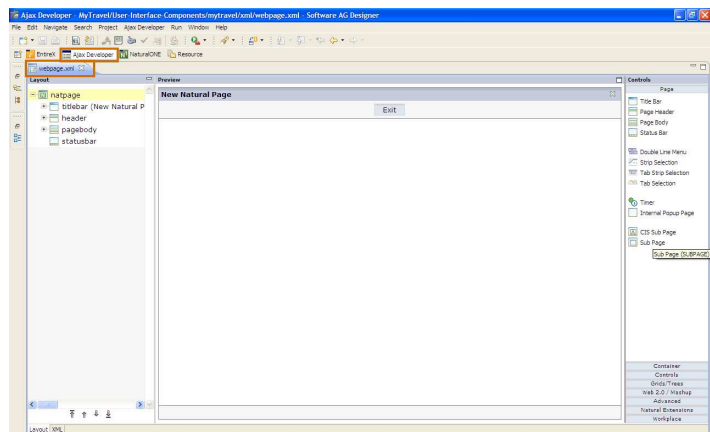
### How to create a WebGUI with NaturalONE? - Creating a Web page -

#### Recommended Reading

- NaturalONE tutorial: How to set-up a NaturalONE project?
- NaturalONE tutorial: How to create a Web GUI with NaturalONE?  
- Creating a new Layout page -

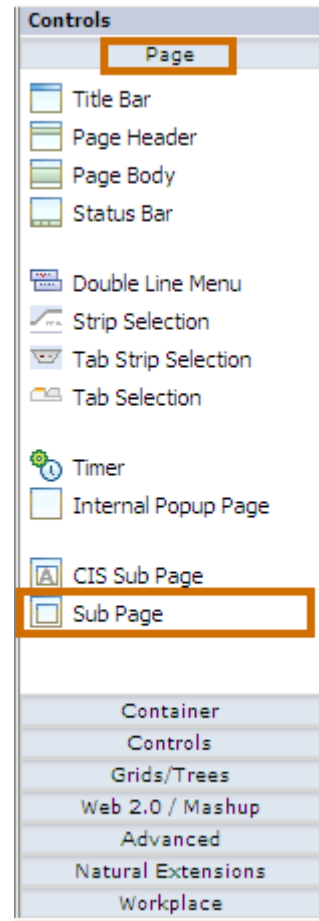
1 Open the **Ajax Developer** perspective.

Create a new page layout called: „**WEBPAGE**“.



- 2 Select **Page** controls on the *Controls* palette.

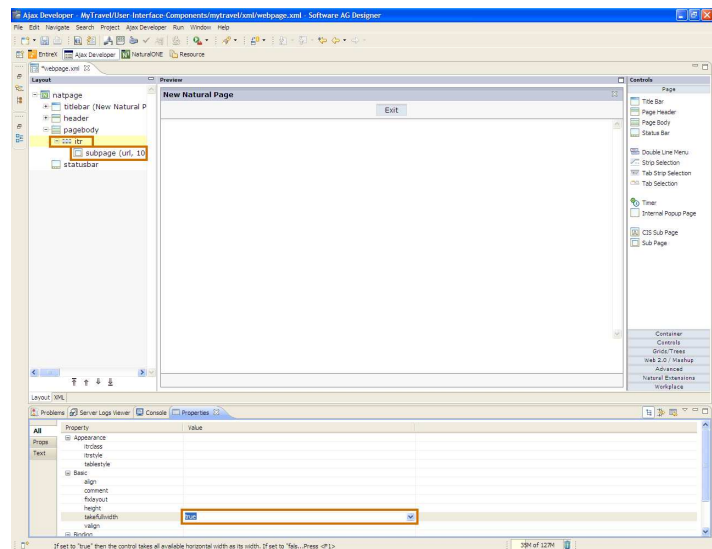
Select the **Sub Page** icon.



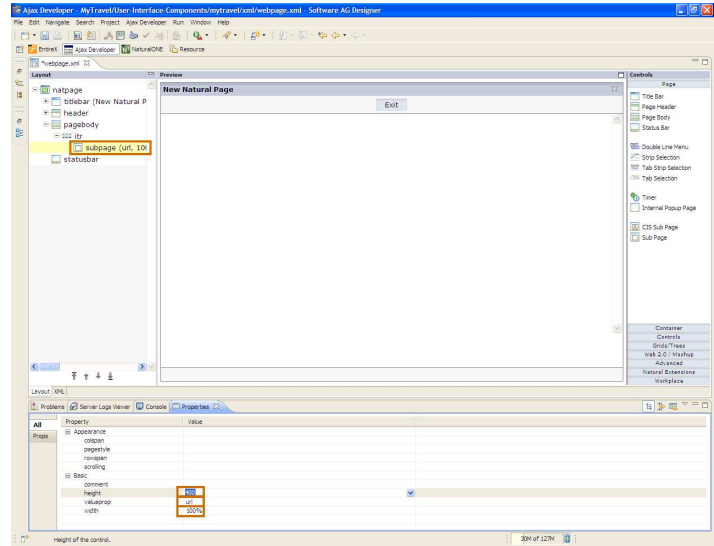
- 3 Drag and drop it on the *Preview* pane.

On the *Layout* pane you can see an *ITR* control (which is automatically generated) and a subpage control as a sub-node.

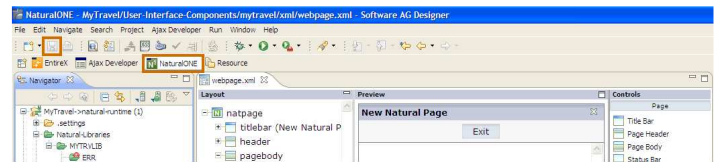
Select the *ITR* control and modify the *takefullwidth* property to **true**.



- 4 Select the *subpage* control and modify a minimal set of properties:  
 height - **400**  
 valueprop - **url**  
 (this field will contain the URL of the required site)  
 width - **100%**

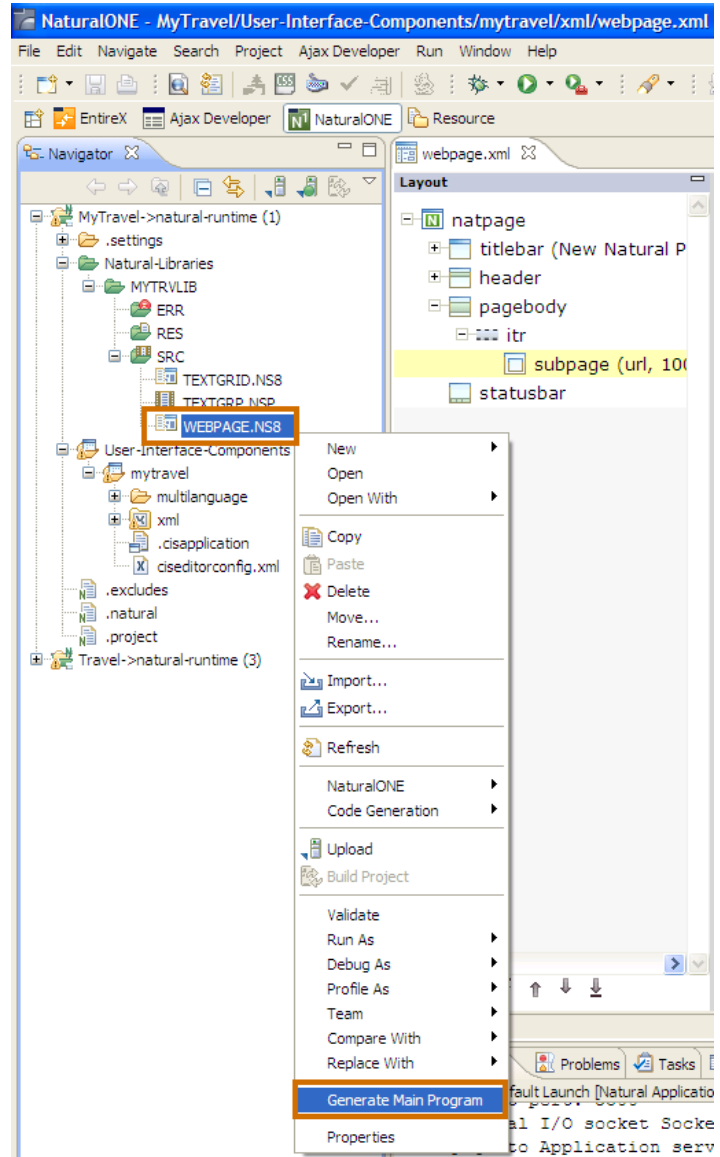


- 5 Save the layout and select the **NaturalONE** perspective.

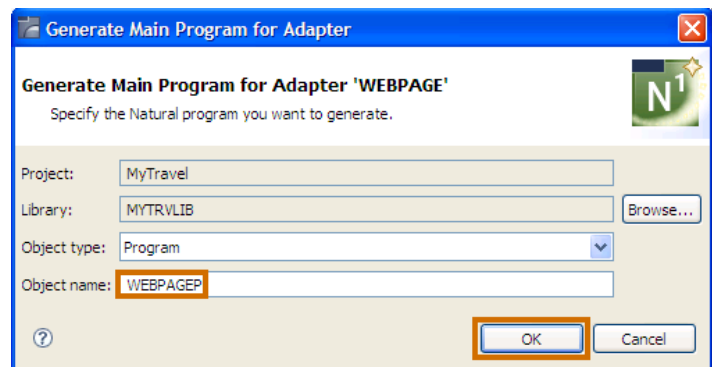


- 6 In the *Navigator* view you can see the newly created adapter **WEBPAGE.NS8**.

Select the adapter.  
Choose **Generate Main Program** from its context menu.



- 7 Type „**WEBPAGE**“ as *Object name* and press **OK**.



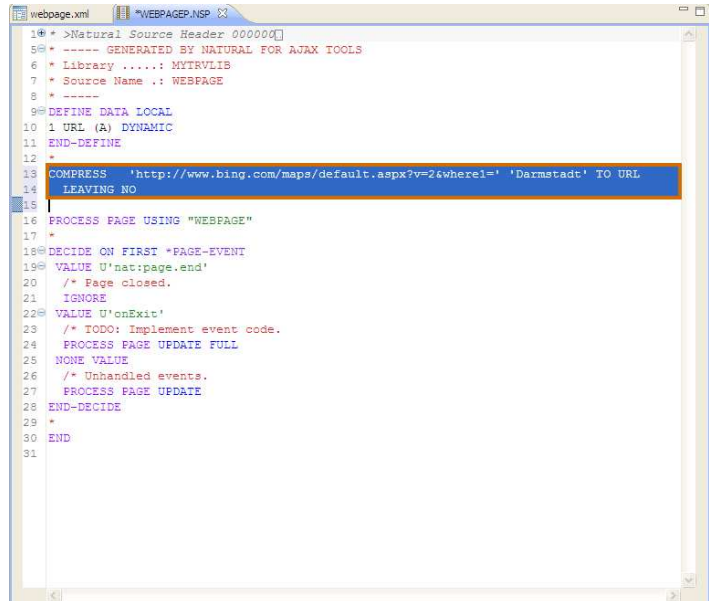
- 8 The source editor will open the generated program.

You still need to set the “URL” to a valid Web site.

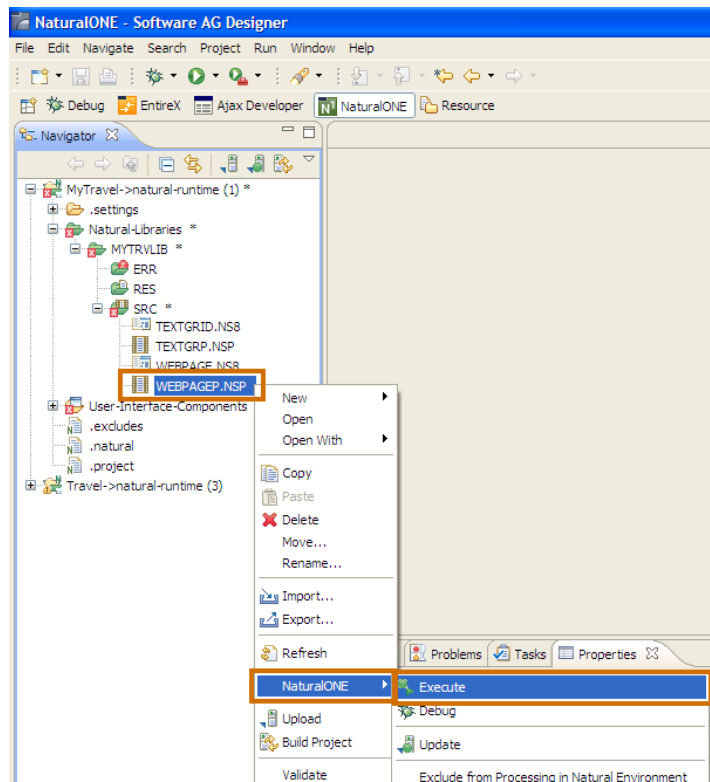
Between the END-DEFINE and the PROCESS PAGE statements type:

```

"COMPRESS
'http://www.bing.com/maps/default.aspx?v=2&where1='
'Darmstadt' TO URL LEAVING
NO".
    
```



- 9 Save the program. Execute it to check the result.



10 Result received:

