

## INSURER INCREASES AGILITY WITH ENTERPRISE ARCHITECTURE MANAGEMENT

### Challenge:

Swiss insurer Suva wanted a clearer picture of how well its heterogeneous IT landscape met business needs. So the company went in search of a solution that would provide a total view of the relationship between business and IT.

### Solution:

After a thorough selection process, Suva chose the Enterprise Architecture Management Solution based on the ARIS Platform. Suva can now synchronize and manage its IT environment and processes in a central ARIS repository. Comprehensive design and modeling tools as well as reports can be used and shared by all stakeholders. IDS Scheer Consulting, a Software AG brand, helped with the implementation using the ARIS Value Engineering methodology.

### Benefits:

- Greater insight into how existing systems can meet new business needs
- Faster response by IT to the business
- Less burden on IT since employees can set up and maintain a Web-based inventory of all IT systems and components
- Consistent documentation of Business Process Management (BPM) and IT architecture management throughout the IT lifecycle
- Greater planning security, minimal project risk
- Faster, high-quality implementation, thanks to the expertise of IDS Scheer Consulting
- Robust, future-proof solution that creates greater transparency and flexibility

# suva

Mehr als eine Versicherung

Suva is an independent, non-profit company based in Switzerland that insures some 115,000 companies and two million employed and unemployed individuals. Suva also provides the Swiss military with insurance on behalf of the federal government and offers prevention, insurance and rehabilitation services. The company was selected for the 2009 ESPRIX Award, a Swiss prize for quality in business excellence.

Get There Faster.™

**“The Enterprise Architecture Management Solution creates a common language for business and IT. We will use it as a central planning instrument at the interface between our business units and IT department. The solution offers exactly what we need to **achieve corporate management excellence.**”**

Dr. Daniel Hanhart | Head of Architecture Management | Suva

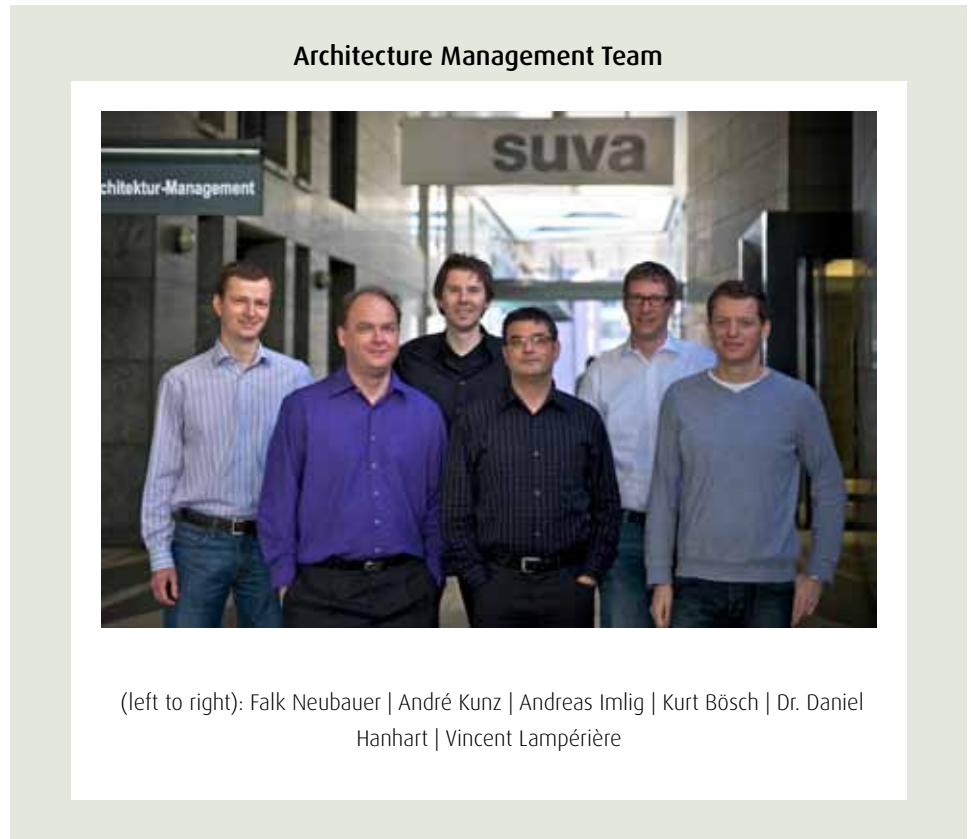
### Known for business excellence

As a provider of Switzerland’s compulsory accident insurance, Suva maintains a position of constant public focus. The company under public law manages a total premium volume of over four billion Swiss francs. These funds come primarily from industrial and manufacturing enterprises with a total of two million employees who are at high risk for on-the-job accidents and occupational illness. Funds must be managed as efficiently as possible to keep costs and premiums at a minimum. Suva accomplishes this extremely well. For this very reason, the company was selected for the independent 2009 ESPRIX Award, a Swiss prize for quality in business excellence.

### Business needs IT architecture management

Suva has relied on the ARIS Platform for business development and quality management since 2003—proof the company understands the value of a good business-IT relationship. It’s essential to any forward-looking company. However, over time, Suva’s IT architecture—including core systems for prevention, insurance administration and rehabilitation as well as different cross-enterprise systems—had become riddled with heterogeneous software and hardware.

Dr. Daniel Hanhart, head of architecture management, explained, “In the past, this was a major cause of the lack of clarity on whether our business strategy was being optimally supported by IT. We wanted to gain more complete insight as to how our existing systems could be used to quickly and flexibly meet new business requirements.”



After a small-scale investigation, Suva launched a thorough evaluation of the leading enterprise architecture management options. ARIS won out again. Suva chose the Enterprise Architecture Management Solution based on the ARIS Platform.

Hanhart said he was highly impressed with the solution’s comprehensive functionality, scalability for a broad user base and transparent price structure for licenses and services. The skill and know-how of IDS Scheer Consulting also made a difference.

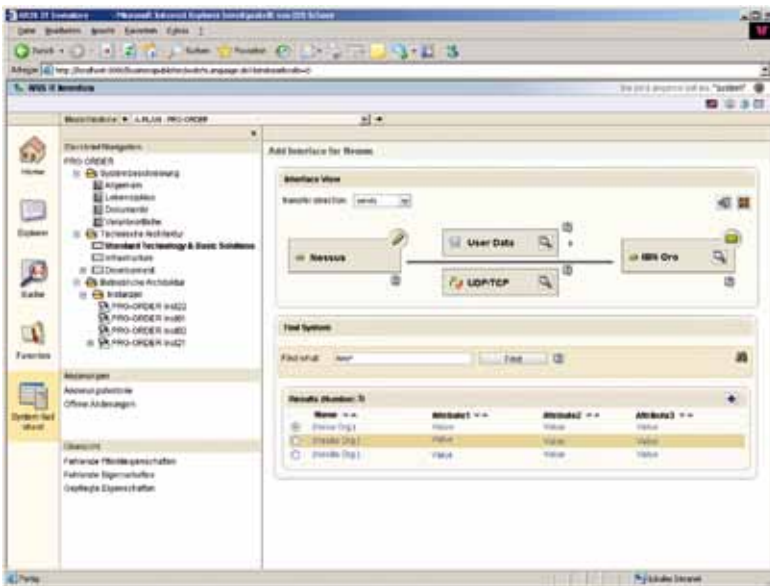
The first projects were completed quickly, thanks to IDS Scheer Consulting’s use of the ARIS Value Engineering methodology. As a first step, IT architecture content was migrated from an existing tool. Next, user-specific reporting was implemented—a first for Suva. Next, IT components were mapped at business process level.

### Business and IT join forces

According to Hanhart, the new solution offers many benefits, including greater transparency, ease of use and flexibility. Thanks to the central enterprise architecture model, which serves as a common documentation platform, dependencies were identified easily right at the project’s start.

## ARIS IT Inventory

ARIS IT Inventory enables the definition and description of interfaces between application systems



The solution also uncovered redundancies in the IT landscape as well as processes with insufficient IT support. Furthermore, existing applications were decoupled and potential modules were matched up with how they aligned with the company's goals—key to creating a Service-Oriented Architecture (SOA) that facilitates greater collaboration between business and IT.

Rather than using a technology-driven method, the company now relies on an IT-coordinated process, Hanhart said. The process will record business processes, define business functions and

identify the appropriate business services. IT will need to implement only those services that a library of specific services cannot provide to the business.

"All in all, we are now able to react to new business requirements much more quickly and have greater planning security and minimal project risk," Hanhart said.

## KEY COMPONENTS



The **Enterprise Architecture Management Solution** combines the market-leading software for enterprise architecture management, along with proven methodology, best practices and expertise.

**ARIS IT Architect** and **ARIS IT Designer** provide tools for analysis, modeling, design and control of IT infrastructures.

**ARIS IT Inventory** enables IT inventories to be created and maintained via the Web, improving data quality for IT planning and compliance with governance standards.

**IDS Scheer Consulting**, known for industry expertise, used the proven ARIS Value Engineering methodology to implement the solution for Suva.

## **ABOUT SOFTWARE AG**

Software AG is the global leader in Business Process Excellence. Our 40 years of innovation include the invention of the first high-performance transactional database, Adabas; the first business process analysis platform, ARIS; and the first B2B server and SOA-based integration platform, webMethods.

We offer our customers end-to-end Business Process Management (BPM) solutions delivering low Total-Cost-of-Ownership and high ease of use. Our industry-leading brands, ARIS, webMethods, Adabas, Natural, CentraSite and IDS Scheer Consulting, represent a unique portfolio encompassing: process strategy, design, integration and control; SOA-based integration and data management; process-driven SAP implementation; and strategic process consulting and services.

### **Software AG - Get There Faster**

To find the Software AG office nearest you, visit [www.softwareag.com](http://www.softwareag.com).

© 2011 Software AG. All rights reserved. Software AG and all Software AG products are either trademarks or registered trademarks of Software AG. Other product and company names mentioned herein may be the trademarks of their respective owners.