



Natural for Eclipse 4.1

DEVELOP 20% FASTER USING A SINGLE INTEGRATED DEVELOPMENT ENVIRONMENT

Increase developer productivity by standardizing on a single Eclipse-based development environment for Natural, Java, COBOL, .NET and other programming languages.

Develop higher-quality applications in less time and at lower cost with Natural for Eclipse 4.1. It's the most feature-rich and robust Eclipse-based environment available in the market for developing and maintaining Natural programs.

The all-new Software AG developed Natural for Eclipse offers an Integrated Development Environment (IDE) that works across programming languages. All developers share the same workbench. That means developers who know Java and .NET can easily learn to program or maintain applications in Natural. Likewise, Natural developers can learn to work more easily in Java and .NET.

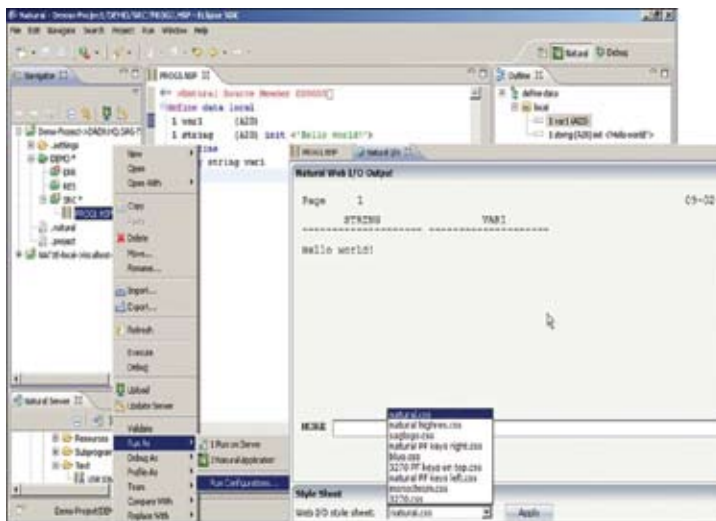
With our latest version of Natural for Eclipse, you can:

- Develop applications up to 20% faster than character-based coding
- Lower development costs by using open-source plug-ins
- Collaborate more easily on development projects
- Optimize your use of staff resources
- Reduce maintenance costs

HOW IT WORKS

Natural for Eclipse 4.1 offers feature-rich "accelerators" to increase developer productivity across the application lifecycle. Key capabilities include:

- Powerful editor functions such as: code completion, syntax coloring, bookmarks and tasks
- Interactive local and remote debugging and statement tracing
- An integrated "data browser" for adhoc retrieval of data from Adabas and SQL databases
- Integration with Natural add-on products



Save time in testing and create higher-quality applications using the integrated debugger, shown here.

FEATURE	WHAT IT IS...	WHY YOU CARE...
Integrated Development Environment (IDE)	<ul style="list-style-type: none"> Comprehensive tool and utility infrastructure speeds up developing Natural applications State-of-the-art IDE offers all the advantages of Eclipse Open-source plug-ins provide the flexibility to customize your Natural development 	<ul style="list-style-type: none"> Meet business needs faster Enjoy a greater choice of development environments Increase developer job satisfaction
Natural perspective	<ul style="list-style-type: none"> Single workbench provides view of all development tools so developers can see all objects on one screen Offers different views of program source and references Lets you develop Natural/Java applications using the same “look and feel” Changes in source code automatically changes views (e.g., call sequence changes) 	<ul style="list-style-type: none"> Make it easier to collaborate on application projects Speed up development Assure well-coordinated projects across your development team
Natural parser	<ul style="list-style-type: none"> Parses all errors in a program and marks them so developers can move quickly through the code Supports report and structured modes Offers instant parsing and error reporting Assures context-sensitive code completion Statement templates work for mainframe, mid-range and distributed environment applications Reduces choice of items in code completion 	<ul style="list-style-type: none"> Increase program quality by recognizing errors at an early stage, immediately after typing code Save time with pre-defined templates
Debugger	<ul style="list-style-type: none"> Offers interactive local and remote debugging as well as statement tracing Supports break and watch points Enables you to debug Natural for AJAX applications Interactive facility enables step-by-step testing Provides all debugging information from one perspective Debug parameters can be changed during run-time Uses the Eclipse “look and feel” to debug server programs (mainframe, UNIX, Linux, Windows) 	<ul style="list-style-type: none"> Save time in testing Reduce maintenance costs with better application quality
Version control	<ul style="list-style-type: none"> Lets you “version” applications using open-source tools such as CVS or Subversion Check-out/check-in capabilities assure total control over the Natural source code and all changes made to it All sources belonging to an application or project are versioned in one place Adapts to your company standards 	<ul style="list-style-type: none"> Improve collaboration and produce high-quality applications Quickly and easily check changes, re-activate previous changes and compare different versions View and access versioned sources in the Natural perspective and synchronize source versions
Server update and private mode	<ul style="list-style-type: none"> From Eclipse, supports ability to execute Compile and Run on remote server (mainframe, UNIX, Linux, Windows) Results like error reports and inputs/outputs can be viewed locally in Eclipse or in a separately started browser In private mode, developers can compile programs without impacting developers working on the same application/library 	<ul style="list-style-type: none"> Give developers the freedom to work from different locations Develop as a team—faster—in parallel Save time by reducing testing efforts Increase program quality by reducing errors

Developers have a single view and workbench with all tools required to support the complete application development lifecycle. The Eclipse-based environment allows Natural and Java developers to work in a unified environment by opening different perspectives. Using open-source tools such as CVS or Subversion enables developers to version and control Natural applications. Highly versatile, Natural for Eclipse works across run-time platforms, including the mainframe, Linux, UNIX and Windows.

GET THERE FASTER WITH NATURAL FOR ECLIPSE

Increase developer productivity by 20%

Natural for Eclipse improves developer productivity by up to 20% over character-based environments by providing a graphical unified development environment for Natural, Java, COBOL and many other programming languages.

Respond faster to business needs

Developers can build applications faster by working in parallel on the same applications, accessing the same library. Using a single workbench, they can move quickly and easily between developing and maintaining Java, .NET and Natural applications.

Cut maintenance costs

Application maintenance can eat up much of your budget. Put your money to better use. Natural for Eclipse’s integrated version control and open-source tools help you cut development, maintenance and administrative costs. New tools, such as the Natural parser for example, help you create better quality applications that need less maintenance.

Use staff wisely

Apply your staff resources where they’re needed most. For example, using Natural for Eclipse, developers with no Natural knowledge can easily learn the language to help develop and maintain your Natural applications.

Develop from where it suits best

Developers can work from different locations using the same development server. Cross-platform development capabilities enable developers to build and deploy applications to their platform of choice.

To find the Software AG office nearest you, please visit www.softwareag.com

ABOUT SOFTWARE AG

Software AG’s 4,000 global customers use our software to improve business processes and drive an agile IT infrastructure. Our customers’ goals are to reduce costs and increase flexibility and efficiency. We help them do this by optimizing and governing their operations and aligning IT with the business goals.

Our leading Business Infrastructure Software portfolio is used for data and system integration and modernization. It fosters new levels of IT agility through SOA and allows the rapid creation of new business processes with BPM.

Our 40-year history of success ensures our customers have a reliable platform for driving future business results – faster.

Software AG – Get There Faster