



ARIS ArchiMate Modeler

ARCHITECTING REAL ENTERPRISE CHANGE

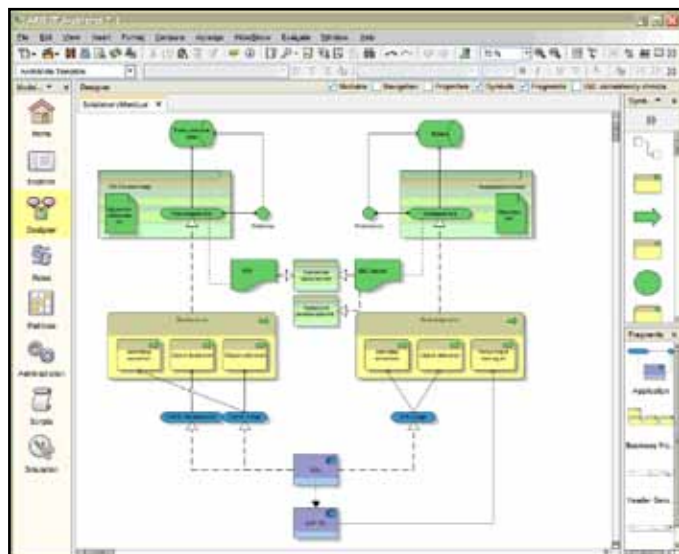
Architecture has evolved into a key enabler of change in many of today's organizations. By ensuring consistency across business solutions, architects lower costs, reduce project risks and optimize the return on technology investments. But the increasing complexity that architects deal with every day can only be managed with the proper tools. ARIS provides architects with a professional architecture tool, based on the leading standards ArchiMate and TOGAF. But ARIS is more, providing out-of-the-box requirements and portfolio management, a comprehensive set of domain-specific languages fully integrated with ArchiMate and professional reporting and collaboration capabilities.

Architecting with ARIS

ARIS stands out for its ease of use and its broad appeal to many different types of users. Thousands of architects worldwide use ARIS to manage and visualize their architectures, and to collaborate with other stakeholders in projects of all sorts and sizes. With ARIS, architects are able to create solution architectures from an enterprise architecture, assess the impact of the change, define the transition, link detailed design models to the architecture and share all of it with their

stakeholders. And all the while they are establishing full traceability from strategic business objectives and business requirements right down to the technical design decisions.

Software AG is committed to open standards and actively supports the development of ArchiMate as a member of The Open Group. This includes aligning ArchiMate better with TOGAF and improving ArchiMate on the basis of years of experience in architecture projects.



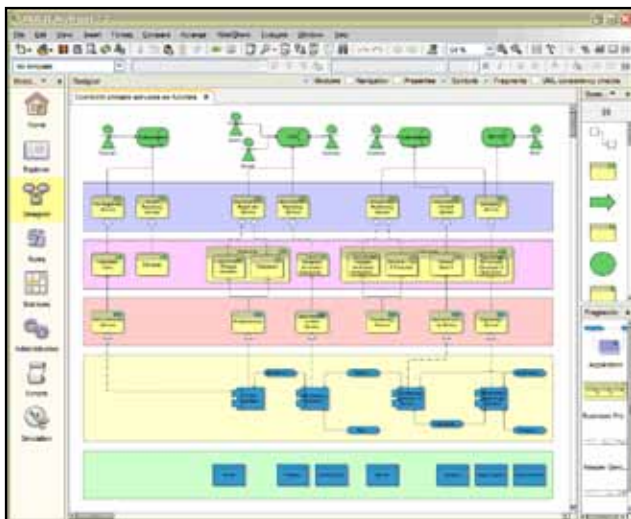
Solution architectures are easy to model in ARIS ArchiMate Modeler.

Supporting the architecture process

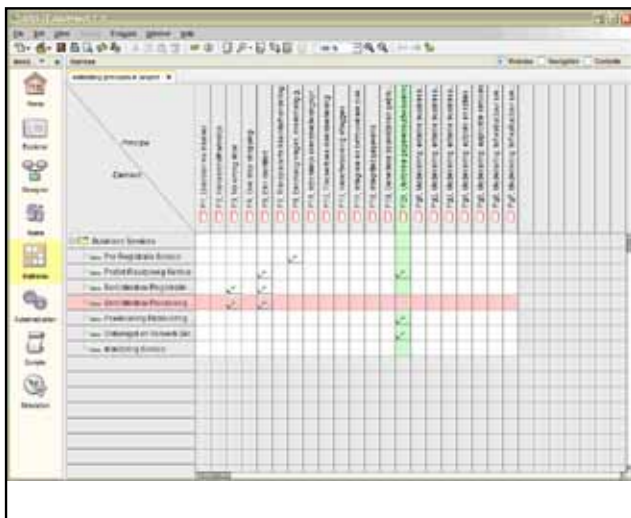
Architecting has become a key transformation function in today's organizations. Architecture enables organizations to increase consistency between solutions, to lower costs and to mitigate project risks. To achieve that, architects must work together with many stakeholders. To build a comprehensive picture of the as-is enterprise, architects must collaborate with process and IT managers. To construct a to-be architecture, they must join forces with business managers and product strategists. To ensure consistent solutions are realized, they must work with project portfolio managers and project managers. With ARIS, all these stakeholders can work together.

Since ArchiMate only covers high-level enterprise architecture, additional 'domain languages' are required to capture the full architecture. Therefore ARIS not only provides full ArchiMate support, but also provides all of the key domain languages needed to capture the details of your architecture, ranging from objectives and Key Performance Indicators (KPIs), requirements and projects, processes and product/markets to UML and network diagrams.

Moreover, because ARIS connects to the world's leading platforms, you can use ArchiMate to architect your SAP and Oracle projects, or integrate services on webMethods and other platforms. ARIS enables you to place architecting and ArchiMate at the heart of your organization's change process.



Layered views makes complex enterprise architectures easy to communicate.



Matrices can be used to visualize relationships, e.g. which business services implement certain architecture principles.

KEY BENEFITS

Full ArchiMate support

Support for major architecture methods and frameworks such as TOGAF, DYA, IAF and Zachman

Integrated out-of-the-box support for domain-specific languages, such as BPMN, ERM and UML

Requirements management and project portfolio management built right into the tool

User-friendly designer

Extensive reporting and publishing capabilities

Scalable repository with professional user management, versioning and workflow support

Integration through open standards and with leading development and execution platforms

Take the next step to get there - faster.

To find the Software AG office nearest you, please visit www.SoftwareAG.com

ABOUT SOFTWARE AG

Software AG is the global leader in Business Process Excellence. Our 40 years of innovation include the invention of the first high-performance transactional database, Adabas; the first business process analysis platform, ARIS; and the first B2B server and SOA-based integration platform, webMethods.

We offer our customers end-to-end Business Process Management (BPM) solutions delivering low Total-Cost-of-Ownership and high ease of use. Our industry-leading brands, ARIS, webMethods, Adabas, Natural, CentraSite and IDS Scheer Consulting, represent a unique portfolio encompassing: process strategy, design, integration and control; SOA-based integration and data management; process-driven SAP implementation; and strategic process consulting and services.

Software AG - Get There Faster

© 2010 Software AG. All rights reserved. Software AG and all Software AG products are either trademarks or registered trademarks of Software AG. Other product and company names mentioned herein may be the trademarks of their respective owners.