



ADABAS AND NATURAL

Statement of Direction

THE FUTURE OF ADABAS AND NATURAL

Innovations that grow with your business

For more than three decades, companies around the world have built and run their mission-critical applications on Adabas and Natural. As the world and technology has evolved, Software AG has continuously added products and capabilities to keep your core business applications flexible to grow and change with your business. Software AG's vision for Adabas and Natural aims to help you achieve your goals and plan for the future by ensuring the long-term viability, adaptability, and affordability of your core applications.

This requires helping you transition mission critical skills from the current workforce to the next generation by ensuring Adabas and Natural are easy to use and appealing to new users. Future viability will continue to depend on increased application interoperability with new technologies and evolutionary concepts such as Service Oriented Architectures (SOA), Business Process Management (BPM) and Governance. Simplifying the development and management process through automation

will drive down costs and increase efficiency and transparency of the system lifecycle and day-to-day operations.

Guided by this vision, Software AG will deliver ongoing product innovations that will ensure the steadfast growth and readiness of your Adabas and Natural systems. The key principles driving new product development are:

- Ease of Use
- Interoperability
- Efficiency and Transparency

This Statement of Direction* outlines the product vision and strategy for Adabas and Natural. It provides you insight into how Software AG anticipates your future needs and demonstrates that your investment in Adabas and Natural will continue to support your business growth now and into the future.

Transferring skills to the next generation to meet the challenges and growth of the future.



*This document represents Software AG's current view of its future product development cycle. It is intended for information purposes only and should not be interpreted as a commitment on the part of Software AG. Software AG makes no warranties, express or implied, in this document.



RECENT INNOVATIONS

Who is Software AG?

For over 40 years, we've been inventing new and better ways to help organizations achieve business results faster.

ARIS – Integrated software for continuous process transformation and improvement

CENTRASITE – The first standards-based SOA registry/repository

ADABAS – The world's most comprehensive data management system

NATURAL – Highly productive application development and deployment environment

WEBMETHODS – The world's leading integrated SOA and BPM suite

Why Software AG?

PLATFORM INDEPENDENT – Our vendor-neutral platform helps you leverage your current software investments—and empower them to deliver the results you always wanted.

FAST RESULTS – Out-of-the-box functionality and open, standards-based solutions help you achieve ROI months and even years ahead of the industry average. Read more about our customer successes at www.softwareag.com/customers.

AS GLOBAL AS YOUR BUSINESS – We have 65+ global business and technology partners, 10,000 customers in 70 countries and are one of the 25 largest enterprise software vendors in the world.

STABILITY – Our revenue growth and profitability are enviable within our industry—Software AG's revenue has more than doubled within the past five years.

NaturalONE

This high-productivity Integrated Development Environment (IDE), based on open-source Eclipse, lets developers code and test applications. The Eclipse environment is influential in attracting the next generation workforce to Natural. NaturalONE allows you to expose objects as Web Services and create rich Web interfaces; Producing systems that not only support enterprise SOA and BPM but also appeal to business users.

Data Archiving for Adabas

This state-of-the-art browser-based tool reaches across multiple platforms and databases to remove infrequently used data and consolidate it in an archive. It provides automated archiving functions and robust tools for search, verification, extraction, restoration and recovery. Archiving increases application performance and availability while decreasing hardware costs.

Optimize for Infrastructure

This infrastructure activity monitoring solution provides real-time insight into the performance of Adabas, Natural, webMethods ApplinX and EntireX from a single browser-based environment. Optimize for Infrastructure has the unique ability to identify and predict patterns of activity—then alerting you to potential issues before they become costly outages.

Continuing the Integration Story...

With the deepening integration of Adabas and Natural with Software AG's other leading-class technologies (i.e., webMethods, CentraSite and ARIS), we enable you to develop and deliver service- and process-oriented business applications even faster.

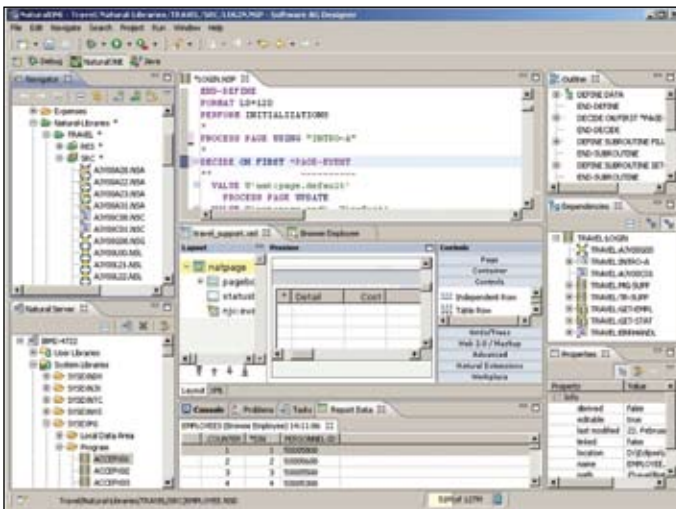
EASE OF USE

Eliminating the skills shortage debate

The development, test and management of applications and databases deployed in cross-platform and large-scale environments are often an issue for resource-bound users, developers, and administrators. To compound the issue, a new generation of developers and database administrators is being asked to operate and build on to these mission critical systems.

Among the hurdles of skills transference is that some applications may suffer from poor code quality due to years of development by different developers and external parties. Software AG is striving to help you improve that code quality and lower the cost of maintenance by providing tools to define code standards and automatically check for compliance at development.

In some cases, simple user interface improvements can help drive resource efficiencies and simplify skills training. Software AG stays abreast of the latest trends in browser technology and rich internet applications in order to create intuitive, simple user interfaces that appeal to old and new users, developers and DBAs. User interface improvements to development, administration and monitoring environments enable stakeholders to manage tasks according to their security permissions and more quickly perform root-cause analysis.



NaturalONE in Eclipse: Automated functions and the Eclipse environment simplify development and testing while attracting the next generation workforce.

WHAT YOU CAN EXPECT

Natural

Coding Standards and Quality Enforcement

- Enforce coding standards and quality with automated checking functions
- Define coding standards (i.e., naming conventions, statement use, comments)
- Coding automatically checked at development
- Quality checking reports link directly to source code

Test Enhancements

- Partially retest modified programs
- Run regressions tests to uncover errors
- Simulate load for browser-based user interfaces, Natural objects and Web Services
- Test batch applications

Mainframe Application Development Tools

- Develop Mainframe Applications from Eclipse
- Develop and maintain COBOL code
- Edit JCL, control jobs, access PDS member and files and browse Sysout

Adabas

Database Administration

- Administration and Monitoring in same environment
- Custom browser- and role-based portals
- Workspace composition from predefined portals (e.g., calendar, Adabas file list)
- Context aware workplaces with drag and drop capabilities for custom views

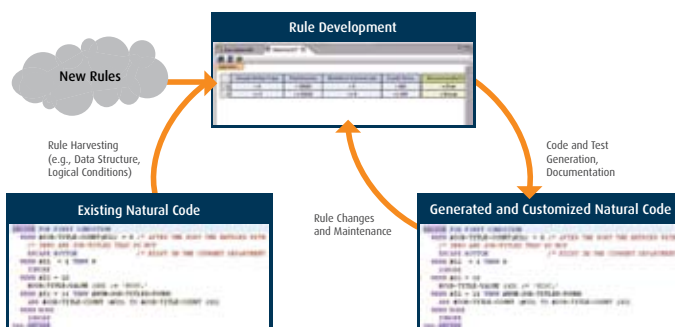
INTEROPERABILITY

Seamless integration with BPM, SOA, WEB, Business Intelligence

Whether it's the variety of hardware you operate on, the applications you interact with or the tools you use to complement your core applications, interoperability is the key to success. The demand today to make application functionality transparent and available within a SOA for business process automation (e.g., workflow approvals) or composite applications (e.g., customer single-view) is limitless. Unfortunately, the cost and time required to expose business logic with standard service interfaces is cumbersome.

Business applications today often contain hundreds of business rules coded in various styles that are often not well documented. Software AG is developing tools to uncover and record these rules using graphical modeling tools and automated detection. Through the use of graphics, the code for new services and documentation is generated without programming.

Business Intelligence and Data Warehouse environments demand live operational data to automate business processes without creating data redundancies. Software AG is working towards a solution to replicate data from Adabas to these new environments thus eliminating the need for long-running Extract Transform Load (ETL) processes to move data into your analytical systems.



Rule Development with Graphical User Interface: The graphical design of application logic simplifies the creation and harvesting of business rules and automatically generates code and documentation. No programming needed.

WHAT YOU CAN EXPECT

Natural

Advanced Rich User Interfaces (RIA)

- Embed rich media features with MS Silverlight and Adobe Flash
- Intuitive dashboards with data visualization
- Fast clients for power users and data entry
- Integrated workplaces displaying data and documents (e.g., Filenet, Sharepoint and Documentum) side by side

Application Integration with SOA and BPM

- Develop advanced business services and AJAX web pages with a new Natural code generation engine
- Debug across Natural, RPC server and Web Services
- Register Web Services with metadata from Predict

Business Rule Development

- Develop business rules in graphical tool
- Discover rules, conditions, and data structures in existing code and transfer to business rule development tool
- Generate Natural code from business rule definitions
- Expose business rules as Web Services or Natural business services

Adabas

Data Integration and Data Sharing through Replication

- Replicate from Adabas to data warehouses and business intelligence environments across multiple platforms
- Replicate data directly to applications or SOA/BPM environments via messaging middleware (e.g., JMS, EntireX)
- Enrich replication data with data from other data sources or databases
- Advanced Adabas SQL connectivity supporting large object and SQL data
- Auto-detect changes in Adabas database schemas and automatically utilize them when accessing Adabas with SQL

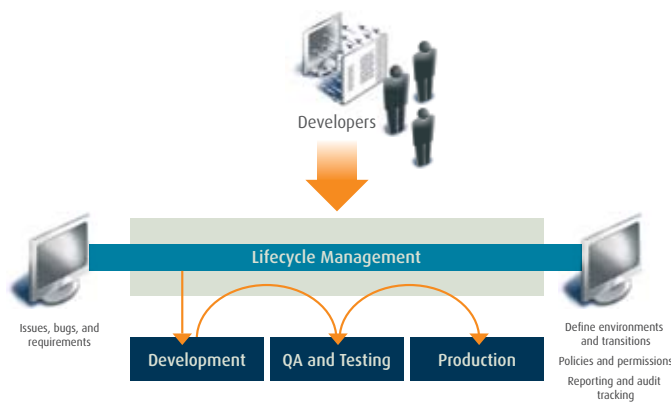
EFFICIENCY AND TRANSPARENCY

Through automation, testing and monitoring

Software AG recognizes that managing the lifecycle of applications and keeping system operating problem-free are some of the most time consuming tasks in today's world of mixed technologies and multi-tier architectures. Software AG seeks to drive greater efficiency by automating tasks and simplifying test and monitoring wherever possible to free up developer and DBA resources.

Software AG is developing a lifecycle management tool that aligns versioning, deployment and configuration management with issue and bug tracking processes. To improve the testing phase of the application lifecycle, an automated solution for extracting live data subsets with data masking is being implemented to protect information privacy. These capabilities are critical to ensuring IT governance and transparency.

To ensure the greatest efficiency and transparency of your IT operations, Software AG envisions an end-to-end monitoring solution that can monitor infrastructure, application and business processes. The next generation of monitoring tools for Natural and Adabas will address the need for robust diagnostic capabilities that can quickly identify the root cause of a problem and pin-point the location of the bottleneck. Measurements against business processes Key Performance Indicators (KPIs) and predictive analysis will support a complete view of operational behavior and predict performance problems before they occur.



Lifecycle Management: A world of mixed technologies on a multi-tier architecture requires a common approach to Lifecycle Management to ensure IT Governance and transparency.

WHAT YOU CAN EXPECT

Natural

Application Lifecycle Management

- Define different environments and lifecycle stages
- Automate transitions from development to test to production
- Link bug-tracking tools to development
- Integrate mainframe configuration and change management tools in Eclipse

Application Performance Diagnosis

- Measure performance at the code level
- Identify test coverage by code segment analysis
- Monitor infrastructure impact on application performance
- Track key performance indicators of business processes
- Monitor response-time and resource usage in distributed environments

Adabas

Database Performance Diagnosis

- Browser-based display
- Operational statistics and metrics in rich diagrams and reports
- Drilldown into calls and transactions without leaving diagnostic environment
- Access log and trace files from multiple platforms from a single view
- Automatic database diagnostic alerts (e.g., out of disk space, broken network connections)

High Availability

- Adjust buffers dynamically
- Administer database while processing transactions
- Reorganize database incrementally

Secure Data Testing

- Create test data with a repeatable, automated solution
- Mask data based on rule knowledgebase
- Extract live data subsets with masking



Software AG provides multiple channels to deliver services, support and knowledge about Natural and Adabas.

Developer Communities

Whether you are a webMethods, CentraSite, or an Adabas and Natural user, there is a Community created specifically to meet your needs. Exchange best practices and chat with experts using discussion forums, and get the latest product news and resources such as documentation, tutorials, code samples, online seminars and so much more! Share insights with your colleagues and receive updates on product roadmaps and strategy. Join the Software AG Communities at:

<http://communities.softwareag.com>

Software AG's Global Consulting Services (GCS)

Get best practices for application development and modernization, data management, platform migration, integration, Service Oriented Architecture (SOA) and Business Process Management (BPM). GCS has flexible global delivery models, including local and regional, near-shore and off-shore development, which assure that we will apply the right expertise to your projects at the right cost. Visit:

<http://www.softwareag.com/corporate/service/gcs>

Software AG Global Support

Dedicated to providing the highest level of service with 24x7 phone support and one hour reaction time for severity "crisis". Software AG Global Support employees can assist you in English, German, Spanish, French, Brazilian Portuguese, and Japanese. Empower is Software AG's Global Support extranet designed to meet your needs with timely information, a comprehensive knowledgebase, and direct access to our technical experts. Empower is available 24 hours a day whether you need product information, have a technical question, or need to download a repair. Get answers fast – at your convenience, visit:

<https://empower.softwareag.com>

Global Presence

Argentina	Netherlands
Australia	Nicaragua
Austria	Norway
Bahrain	Oman
Belarus	Panama
Belgium	Peru
Belize	Philippines
Brazil	Poland
Bulgaria	Portugal
Cambodia	Puerto Rico
Canada	Qatar
Chile	Romania
China	Russia
Colombia	Saudi Arabia
Costa Rica	Singapore
Croatia	Slovakia
Czech Republic	Slovenia
Denmark	South Africa
Dominican Republic	South Korea
Ecuador	Spain
Egypt	Sweden
El Salvador	Switzerland
Estonia	Taiwan
Finland	Thailand
France	Turkey
Germany	Ukraine
Greece	United Arab Emirates
Guatemala	United Kingdom
Honduras	USA
Hong Kong	Venezuela
Hungary	
Iceland	
Ireland	
India	
Indonesia	
Israel	
Italy	
Japan	
Jordan	
Kuwait	
Latvia	
Lithuania	
Luxembourg	
Malaysia	
Mexico	

**To find the Software AG
office nearest you, please
visit www.softwareag.com**

**For information on
IDS Scheer, please visit
www.ids-scheer.com**

About Software AG

Software AG is the global leader in Business Process Excellence. Our 40 years of innovation include the invention of the first high-performance transactional database, Adabas; the first business process analysis platform, ARIS; and the first B2B server and SOA-based integration platform, webMethods. We are unique in offering the world's only end-to-end—and easiest to use—business process management (BPM) solutions, with the lowest Total-Cost-of-Ownership.

Our industry-leading brands, ARIS, webMethods, Adabas, Natural and IDS Scheer Consulting, represent a unique portfolio for: process strategy, design, integration and control; SOA-based integration and data management; process-driven SAP implementation; and strategic process consulting and services. Our comprehensive software and services solutions allow companies to continuously achieve their business results faster.

Software AG – Get There Faster.™

