



Entire System Server

MASTERING MULTIPLE OPERATING SYSTEMS

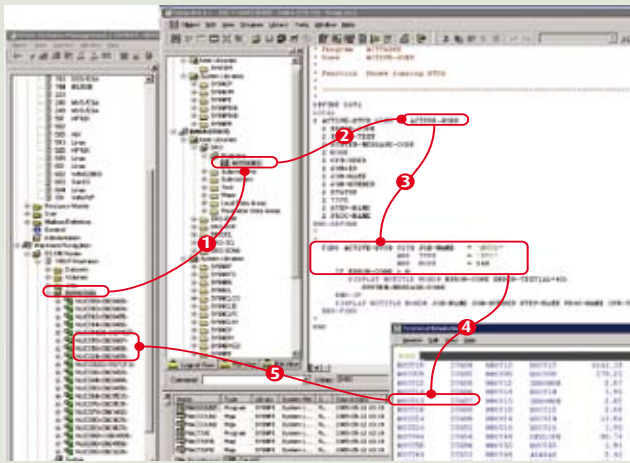
Entire System Server makes information and services of such operating systems as z/OS, z/OS.e, VSE/ESA, BS2000/OSD, UNIX, z/Linux and Windows available to all users, whether they are application developers, system programmers, computer operators or end-users. Entire System Server provides a logical view of operating systems, similar to the way a database management systems provides access to information within databases. Entire System Server can be described as the virtual database of operating systems.

The concept of the “view” is at the heart of Entire System Server, which is available as a service of started tasks on z/OS or VSE, an independent process on Unix or Windows or as a batch sub-task on BS2000. Applications, such as a job scheduler, Web service or computer program, which gain access to JES queues on a z/OS mainframe read a BS2000 file or start a process or a batch script on a

Unix server. More importantly, this can be carried out regardless of where the application is executed. Even console operations can be integrated into applications in a way that is completely transparent for the end-user, who in most cases does not need to know what a batch job or a console command is or where they are executed.

KEY BENEFITS

- System programming in a fourth-generation programming language for z/OS, z/OS(e), BS2000, VSE, z/Linux, Unix or Windows
- A common integration platform for application and system programming from PC to mainframe systems for TP, Web and client/server applications
- Access to internal states of all types of processes across platforms, such as batch jobs, started tasks and Windows services
- Support for familiar operating system functions such as condition codes, steps, procedures, exit codes, file catalogues or spooling such as JES, file systems and E-Mail
- Support for Service-Oriented Architectures (SOA)
- Open interfaces to security systems such as RACF, ACF2, CA-Top Secret and SECOS
- System programming with a graphical interface



- (1) The treeview of the graphical user interface shows a list of active jobs with the jobnumbers in the operating system.
- (2) The program displayed uses the view ACTIVEJOBS.
- (3) It executes a FIND with selection criteria.
- (4) The program generates a list of the active jobs, fulfilling the selection criteria, with jobname and jobnumber.
- (5) Jobname and jobnumber are shown in the treeview.

KEY FEATURES

Integrated automation of IT production and optimization of IT processes

Entire System Server is part of the Entire Systems Management product family. These systems have a graphical user interface that combines the ergonomics of ISPF with the convenience of a PC. All functions and objects can be accessed from applications via application programming interfaces. Access to operating system data and services is enabled through Entire System Server as a general interface.

Integration with system management

Entire Systems Management components access information from systems such as Tivoli, Unicenter and Patrol and reports production status to these platforms.

Integration with application platforms

Internal data and states from systems such as SAP or customized solutions (e. g., Cobol/DB2) are used to automate and optimize the processes of data center operations. On the other hand, internal conditions of Entire Systems Management can be used to trigger the applications.

CUSTOMER SUCCESS

Information Center Munich uses Entire System Server to manage more than 200 databases at the touch of a button

The Information Center Munich operates two z/OS data centers in Nuernberg in a Sysplex cluster for S-Finanzgruppe, an association of German savings and state banks. The Information Center Munich is a specialized service provider, offering technical infrastructures and application solutions and their operation to these financial and public institutions. In addition to the data centers in Nuernberg, major Unix and Windows server farms are in operation at the locations in Munich and Offenbach.

One of the most important implementations of an Entire System Server application at the Information Center Munich is monitoring the operational readiness of more than 200 large databases and their backup parallel to Sysplex operation. A system of agents – written in Natural, the most wide-spread fourth-generation programming language – monitors the address spaces of the z/OS and JES queues by means of the corresponding views of the Task Control Blocks (TCBs). Depending on the situation, the database administrator or operating staff member can control the operation of the databases on different LPARs in the Sysplex cluster. Especially in emergency situations, the operators are protected to a great

extent from operating errors when recovery and restart actions have to be carried out under extreme pressure.

With the implementation of Entire System Server, a management system for database operation was created without mounting a major system programming project. It seamlessly corresponds to the requirements and business processes of the savings bank organizations and enables reliable operation for millions of savings bank customers.

To find the Software AG office nearest you, please visit www.softwareag.com

ABOUT SOFTWARE AG

Software AG is the world's largest independent provider of Business Infrastructure Software. Our 4,000 global customers achieve business results faster by modernizing, automating and improving their IT systems and processes to rapidly build measurable business value and meet changing business demands. Using our solutions, organizations are able to liberate and govern their data, systems, applications, processes and services – achieving new levels of business automation and transparency.

Our industry-leading product portfolio includes best-in-class solutions for managing data, developing and modernizing applications, enabling service oriented architecture, and improving business processes. By combining this proven technology with industry expertise and best practices, our customers improve and differentiate their businesses – faster.

Software AG – Get There Faster.

© 2008 Software AG. All rights reserved. Software AG and all Software AG products are either trademarks or registered trademarks of Software AG. Other product and company names mentioned herein may be the trademarks of their respective owners.