

ARIS for SAP®



ACCELERATE SAP® PROJECTS AND GET PROCESS-DRIVEN FASTER

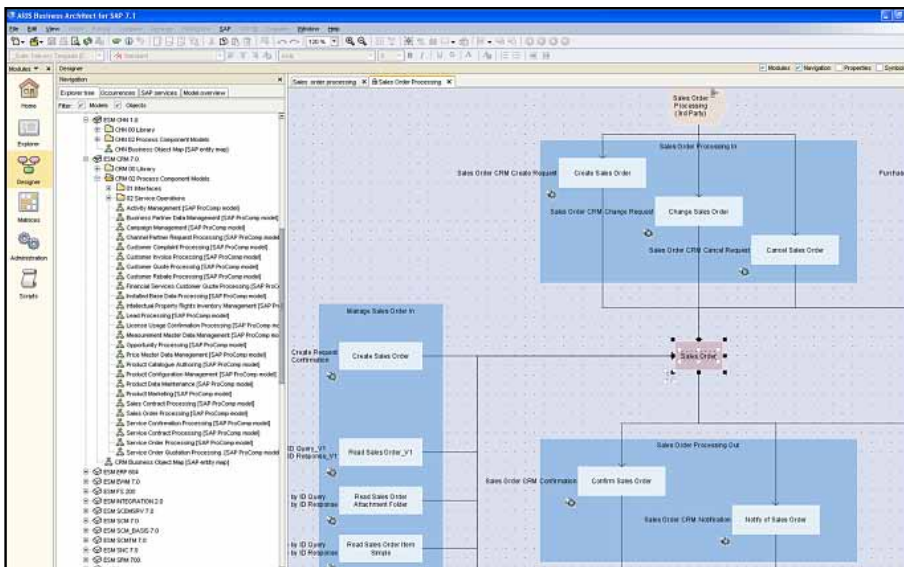
To apply your corporate strategy to your business processes, you need a fast, efficient way to map those processes and business concepts to your SAP® environment. ARIS for SAP can help.

ARIS for SAP is software that accelerates designing, documenting and optimizing SAP processes. Use it to bridge the gap between business and IT by engaging all teams, from project blueprint to go-live.

Use ARIS for SAP to:

- Analyze and align your business requirements with SAP best practices
- Integrate with SAP Solution Manager and SAP NetWeaver BPM
- Cut project times by up to 40 percent
- Simplify and speed up SAP implementations and upgrades
- Document, harmonize and design Business Intelligence (BI) landscapes

ARIS for SAP features ARIS Business Architect & Designer for SAP and ARIS BI Modeler. All are key components of our Process-Driven SAP Management Solution.



Enterprise services in ARIS Business Architect for SAP

KEY BENEFITS

ARIS Business Architect for SAP:

Seamless integration of business processes and SAP environment

Clear communication between user departments and IT

Process standardization across the enterprise plus a faster response to necessary process changes

Optimum integration with SAP configuration and execution tools

Fast adaptation of existing processes (change management)

Supports global roll-out of a central, harmonized process template

Process-based introduction or upgrade of both “transactional” and service-based environments

Reduced time and cost of process definition, implementation, operation, monitoring and optimization—slashing project times by up to 40 percent

Huge overall cost savings (total cost of ownership)

Quick identification and utilization of opportunities in SAP SOA through application of Enterprise Service search, analysis, and blueprinting

Ideal starting point for ongoing process management and optimized business processes

ARIS Business Architect for SAP— Implement and optimize SAP-based processes

With ARIS Business Architect for SAP, you can define business requirements from a process perspective and then align those requirements with SAP reference content using process models.

SAP process design

Save time by re-using SAP processes models as a starting point for ongoing process management and optimization. ARIS Business Architect and Designer for SAP support both SAP and non-SAP modelers so that business and IT can work on common process models in one central repository.

A special wizard guides you through creating consistent SAP-based process models—ready for synchronization with SAP Solution Manager. ARIS Business Architect for SAP supports SAP-relevant concepts like “shortcuts” and attributes. This makes it easy to get started with SAP-compliant process modeling and ensures adherence to specific conventions.

Importing SAP reference content

Jump start modeling processes by importing SAP content, such as:

- Software AG’s industry-best practice content for SAP (Industry.PerformanceREADY)
- SAP Business Process Repository (BPR) and SAP best practice content
- SAP solution maps
- Redocumentation results, which show as-is processes based on execution facts
- SAP Enterprise Service Repository (ESR)

Software AG’s Industry.PerformanceREADY combines preconfigured SAP software and specialist knowledge with industry-specific process scenarios based on SAP best practices.

By re-using central standards (templates, guidelines, examples) from SAP Solution

Manager and pre-configurations using our proven ARIS technology, you can achieve:

- Fast and precise customization of an ERP system, saving time and money
- Process environments that are understood enterprise-wide
- A scalable solution for businesses of all sizes, from small to large corporations
- Sustained process efficiency and ongoing performance monitoring via ARIS Process Performance Manager (PPM)
- Standardized, transparent processes across the enterprise for future-proof growth

Synchronization with SAP Solution Manager

Synchronizing ARIS Business Architect for SAP with SAP Solution Manager ensures you have all the necessary process information for your implementation or upgrade project. Scenarios, processes and process steps, along with the associated SAP transactions and SAP system landscape, can be imported into ARIS Business Architect for SAP from SAP Solution Manager. You can re-use the relevant organizational and master data, as well as all documentation in ARIS Business Architect for SAP.

Process content imported from SAP Solution Manager is transformed into complete end-to-end processes. You can enhance content related to configuration to include information, such as manual operations and their description, executing end-user roles, as well as data and information used. This enhanced process documentation can then be synchronized with ARIS Business Architect for SAP.

ARIS Test Designer

Eliminate double-work by re-using process knowledge. With ARIS Business Architect for SAP, you can accelerate process-based test conception, create test case descriptions and conduct end-to-end process-based tests. Reduce your risks with comprehensive, high-quality testing. You also can transfer test scenarios into SAP Solution Manager or HP Quality Center for actual testing.

ARIS Project Documentation Assistant

Reduce documentation time and costs. With ARIS Business Architect for SAP, you can automatically create required project documentation, such as:

- Project scope
- Business requirements document
- Business blueprint document
- Technical design document
- Reports, Interfaces, Conversions, Enhancements and Forms (RICEF) specifications

Integration with ARIS Business Publisher

Assure process environments are well understood, enterprise-wide, by publishing process content via ARIS Business Publisher. Improve communication across all departments and locations by providing easy Web-based access to models and related documentation. Get feedback from your organization to improve the SAP solution while it's under construction.

You can use published business blueprint models for training and end-user documentation. The ARIS Online Help functionality offers a direct call of transactions from your published business model. Additionally, the related process models can be included in the SAP help for reference.

Direct link to SAP ESR

Analyze processes and services in parallel with direct access to SAP enterprise services via the ESR. This direct link accelerates your search for services related to specific processes and helps you align your SOA with business process requirements.

ARIS BI Modeler—Quickly redocument, harmonize & design your SAP® BI BW landscape

ARIS BI Modeler automatically redocuments your existing SAP BI landscape to help you cut operating costs and reduce the time and complexity of BI consolidation projects.

BI redocumentation

ARIS BI Modeler extracts data flows and structures from the SAP BI systems via a one-way interface and then models them in ARIS. These models provide the starting point for planning and implementing an Enterprise Data Warehouse using ARIS BI Modeler. Data structures and data flows are presented in a user-friendly way with an SAP "look and feel."

Along with redocumenting data flow, ARIS BI Modeler also documents BEx reports and also business content (or reference models).

Central ARIS repository

The resulting views of your SAP BI systems, along with existing SAP BI implementation detail and all SAP BI objects, are stored in the central ARIS repository. You can reference them at any time and integrate them with business processes generated from ARIS for SAP.

Fast BI harmonization

ARIS BI Modeler helps you quickly identify how to harmonize and consolidate multiple SAP NetWeaver Business Warehouse systems. The software offers automatic system comparison of data structures, audit-proof versioning of different BI system states as well as a graphical display of comparison results.

Support for Enterprise Data Warehouse design

Use SAP Business Warehouse (BW) metadata in ARIS to plan your enterprise data warehouse structures. You can map your entire SAP NetWeaver BW solution using ARIS models and see integrated BI information using a business process view. Quickly create rough or detailed concepts of the data warehouse as well as generate design specification documentation.

KEY BENEFITS

For ARIS BI Modeler:

First product that extracts technical metadata from SAP BI systems via an SAP BI interface and performs automatic visualization

SAP BI redocumentation and the subsequent design, planning and implementation of harmonization measures cuts the cost of operating your SAP BI landscape

Reduce the complexity and duration of BI consolidation projects by conducting automatic system comparisons of different SAP BI systems

SAP BI metadata can be used in ARIS to plan your Enterprise Data Warehouse structures

Automatically generates the data concept behind your existing SAP BI implementations

Integration with ARIS for SAP NetWeaver allows a close tie-in with your business

Take the next step to get there - faster.

To find the Software AG office nearest you, please visit www.SoftwareAG.com

ABOUT SOFTWARE AG

Software AG is the global leader in Business Process Excellence. Our 40 years of innovation include the invention of the first high-performance transactional database, Adabas; the first business process analysis platform, ARIS; and the first B2B server and SOA-based integration platform, webMethods.

We offer our customers end-to-end Business Process Management (BPM) solutions delivering low Total-Cost-of-Ownership and high ease of use. Our industry-leading brands, ARIS, webMethods, Adabas, Natural, CentraSite and IDS Scheer Consulting, represent a unique portfolio encompassing: process strategy, design, integration and control; SOA-based integration and data management; process-driven SAP implementation; and strategic process consulting and services.

Software AG - Get There Faster

© 2010 Software AG. All rights reserved. Software AG and all Software AG products are either trademarks or registered trademarks of Software AG. Other product and company names mentioned herein may be the trademarks of their respective owners.