



webMethods for SAP

CONNECT SAP & ANYTHING—MAKE INTEGRATION INFINITELY EASIER

If you're looking to integrate non-SAP apps and trading partners with your SAP environment, webMethods for SAP is the cheapest, fastest and most robust option available.

webMethods for SAP is Software AG's comprehensive solution for application and B2B integration for enterprises that use SAP. It is an extension of SAP's original solution for integration, the SAP Business Connector.

The webMethods for SAP solution—based on our ESB and B2B gateway, the webMethods Integration Server and Trading Networks—represents the most modern integration solution available. It's widely considered the strongest solution for SAP integration, especially in heterogeneous environments.

Even when you've deployed SAP NetWeaver for SAP-to-SAP integration, webMethods for SAP makes it easy to achieve optimal integration between SAP and non-SAP systems, as well as B2B integration in a single, integrated platform.

What's more, webMethods for SAP addresses the spectrum of business integration needs faced by global organizations—both internally and with trading partners—such as supply chain automation, application integration, mainframe integration, data synchronization and SAP instance consolidation.

FEATURES

Fully featured integration solution

webMethods for SAP features the industry's leading ESB technology—webMethods Integration Server—along with webMethods Trading Networks, a B2B gateway that enables you to extend your SAP business processes to external trading partners, suppliers and customers. It also includes access to a broad range of application, technology and B2B adapters for best-in-class integration between SAP and third-party environments.

KEY BENEFITS

- Speed up implementation with backwards compatibility with SAP Business Connector while eliminating the need to redevelop existing deployments for SAP XI
- Reduce implementation and operating costs and avoid additional fees associated with using SAP XI for non-SAP integrations
- Improve B2B links with webMethods for SAP's own robust trading partner management including message persistence and a single system of record for partner transactions
- Count on high performance—the core elements of the webMethods platform have helped thousands of SAP customers meet their integration needs and evolved from the experience gained from these demanding integration deployments
- Lower risks by leveraging your development investment—existing integrations work without the need for any recoding, providing continuity of function

Easy compatibility with SAP Business Connector

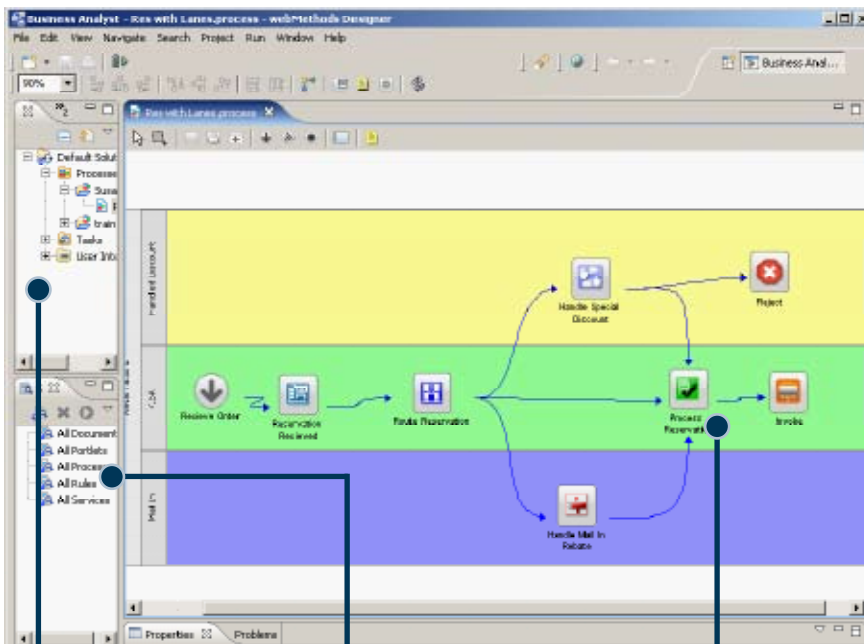
Extend the benefits of your SAP NetWeaver Process Integration (PI) or Exchange Infrastructure (XI) investment and avoid time-consuming and costly recoding. With webMethods for SAP, you can leverage your existing development investments. Existing integrations work without the need for any recoding, providing continuity of function.

Backwards compatibility with SAP Business Connector speeds implementation while eliminating the need to redevelop existing deployments for SAP NetWeaver PI or XI.

Cost-effective integration

webMethods for SAP is a functionally rich and cost-effective alternative to NetWeaver PI or XI for SAP customers who are looking to integrate non-SAP applications and trading partners with components of their SAP NetWeaver architecture. You'll also avoid additional fees associated with using SAP NetWeaver for non-SAP integrations.

Graphically model and manage EDI and B2B transactions



Direct links to underlying system components.

Single click deployment - no programming required!

Visual modeling - designed for business analysts.

B2B standards support

webMethods for SAP offers the broadest support for established and emerging Web services, e-business and technology standards. This includes unmatched support for EDI, RosettaNet, CIDX, SWIFT, ebXML and many other B2B standards.

Developer and business views

With webMethods for SAP, business analysts and application developers work with the same model, making collaboration easier. Design tools allow business analysts to intuitively define and deploy complex process models. Once a process is designed by a business user, developers simply provide additional information required for execution. The same graphic model of the process is available at run-time, providing business process owners with a visual status of each process.

SAP R/3 gateway

Achieve stability and performance at all times—even peak times. Software AG offers an SAP R/3 gateway that enables high-performance communication between your custom-built systems and SAP R/3 in both directions. Code is generated rather than programmed, paving the way to efficient conversion of your interfaces. Software AG's SAP R/3 Gateway uses the interface descriptions of the system being integrated to generate the appropriate communication modules—reducing the time it takes to build a new interface to just a few hours, speeding up project delivery.

Take the next step to get there - faster. Visit www.softwareag.com/esb to learn more about our integration platform and webMethods for SAP.

To find the Software AG office nearest you, please visit www.SoftwareAG.com

ABOUT SOFTWARE AG

Software AG is the global leader in Business Process Excellence. Our 40 years of innovation include the invention of the first high-performance transactional database, Adabas; the first business process analysis platform, ARIS; and the first B2B server and SOA-based integration platform, webMethods. We are unique in offering the world's only end-to-end—and easiest to use—business process management (BPM) solutions, with the lowest Total-Cost-of-Ownership.

Our industry-leading brands, ARIS, webMethods, Adabas, Natural and IDS Scheer Consulting, represent a unique portfolio for: process strategy, design, integration and control; SOA-based integration and data management; process-driven SAP implementation; and strategic process consulting and services. Our comprehensive software and services solutions allow companies to continuously achieve their business results faster.

Software AG – Get There Faster

Copyright © 2010 Software AG, Darmstadt, Germany and/or Software AG USA, Inc., Reston, VA, United States of America, and/or their suppliers. All rights reserved.